



ANNUAL REPORT

2013 | 2014



An Australian Government Initiative

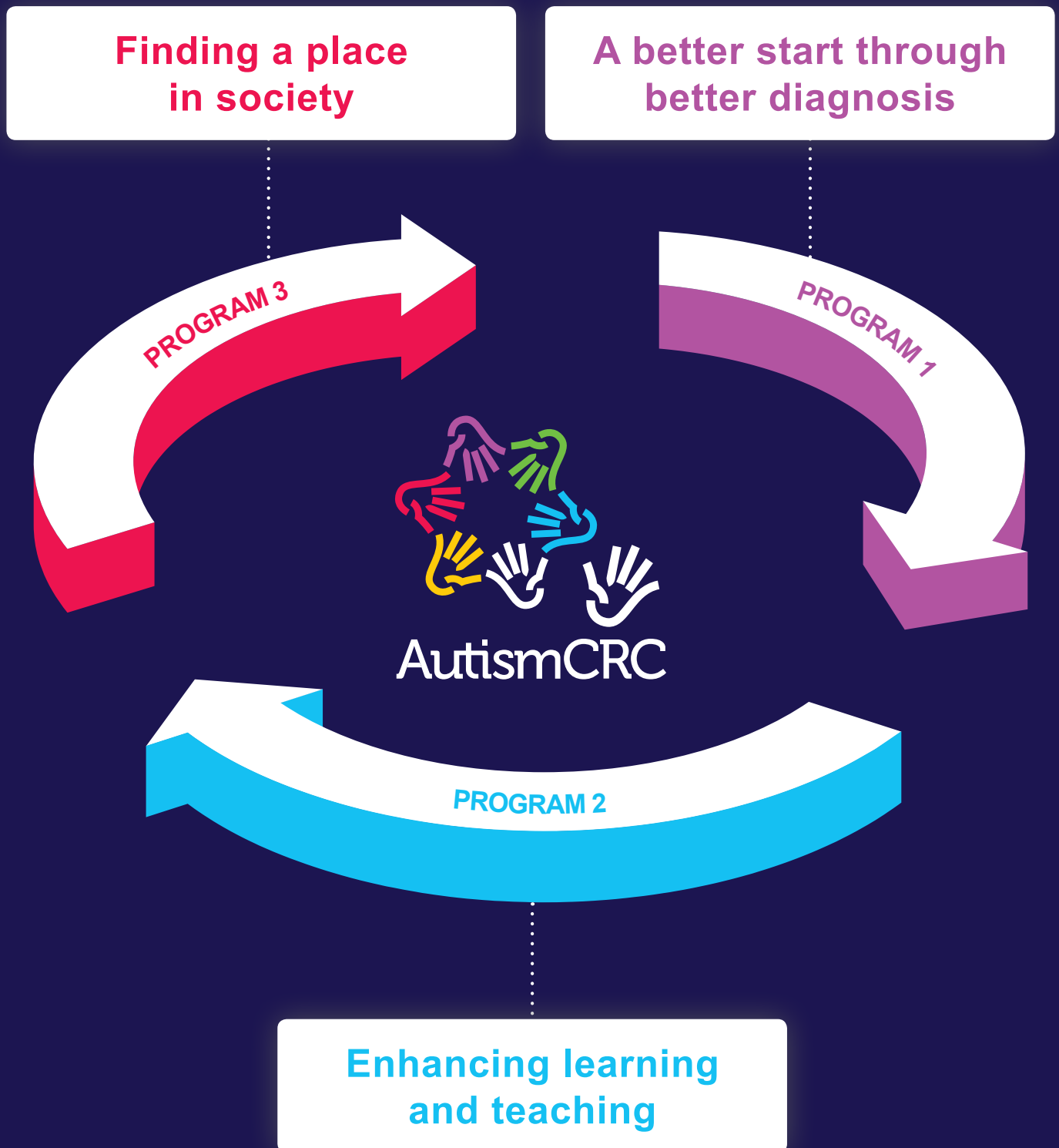


Contents

About Autism CRC	4
Report from the Chair	6
Report from the CEO.....	7
Overview.....	8
1 Highlights 2013/14	9
1.1 Research and Development.....	10
1.2 Education and Training.....	10
1.3 Financial	10
1.4 Communications.....	10
1.5 Utilisation, Commercialisation and Engagement.....	10
2 Structure and Governance.....	11
2.1 Structure	11
2.2 Members.....	12
2.3 Autism CRC Board	13
2.4 Board Committees.....	18
2.5 Autism CRC Key Staff	19
3 Report on Activities	20
3.1 Research and Development.....	20
3.2 Education and Training.....	28
3.3 Financial Performance.....	29
3.4 Communications.....	29
3.5 Intellectual Property.....	30
3.6 Utilisation and Commercialisation	31
3.7 SME Engagement	32
4 Appendix	33
Appendix 1: List of Autism CRC Participants.....	33
Appendix 2: Annual financial report for financial period ended 30 June 2014.....	35
Appendix 3: Autism CRC Publications during Reporting Period.....	58
Appendix 4: Glossary of Terms.....	59



*A unique **whole of life** approach will enhance the lives of millions living with autism.*



About Autism CRC



Mission Statement



To transform the lives of people living with autism across their lifespan through end-user driven research.

The Cooperative Research Centre for Living with Autism Spectrum Disorders (Autism CRC) is the world's first national, cooperative research effort focused on autism. We are taking a "whole-of-life" approach to autism focusing on diagnosis, education and adult life.

Autism is amongst the most severe, prevalent and heritable of all neurodevelopmental disorders affecting at least 1 in 100 children. It is a lifelong condition with estimated annual support costs to Australia potentially exceeding \$7 billion.

A key national challenge is how governments, service providers and researchers together address the diversity of needs of individuals on the autism spectrum, for which definitions are currently broad, presentation and manifestation are diverse and wide ranging, and outcomes are highly variable.



Objectives

Through the establishment of Autism CRC, we have implemented a highly innovative “whole-of-life” research portfolio, and have assembled some of the finest and most respected scientists in their relevant fields. This has enabled Autism CRC to address this national challenge in pursuing its key goals.

Research Program 1

To harness existing knowledge of autism behaviour to accurately diagnose 50% of children with autism prior to their second birthday and over 70% by their third birthday and then incorporate breakthroughs in biological research to identify subtypes of autism and the most efficacious interventions.

Research Program 2

To provide appropriate educational environments and programs for students with autism so that they have the best chance of social, behavioural and academic success, and equipping teachers to manage even the most complex behaviours.

Research Program 3

To improve opportunities for people with autism to successfully participate in higher education, increasing the rate of employment of people with autism by 5% and providing lifelong physical and mental health management.

As a core tenet of its philosophy, Autism CRC engages with end-users at all levels to ensure that the research priorities and findings are grounded in user needs, and have the greatest chance of translation and utilisation.

The end-user environment is comprised of three major groups:

- Individuals with autism and their families or carers, who are the ultimate end-users of the outcomes of the research conducted by Autism CRC. Given that autism is a lifelong condition, the impact on families and carers is both long term and pervasive.
- Professionals who provide advice, assessment and intervention for individuals with autism (paediatricians, general practitioners, psychiatrists, community nurses, early childhood educators, teachers, psychologists, occupational therapists and speech therapists). These professionals work across the public, not-for-profit and private sectors.
- Service providers that employ professionals to provide services to individuals with autism and their families. These include peak bodies, such as the autism associations in each state; private providers; state government departments of education, health and disability; children’s hospitals; and health service districts and practices.

Autism CRC research findings will be made available to all service organisations in order to enhance their impact, utility and translation into policy and practice.

In addition to participation in its research projects, Autism CRC seeks to involve end-users in all aspects of its operations, such as advisory groups for its programs, and CRC policy and program development.

Through the outcomes of its research and its participation in the autism community, Autism CRC also aims to inform the policy debate in Australia relating to education, therapy service provision, health, employment and disability support services for individuals and carers.

Finally, the community, both the autism community and the general Australian public, stand to benefit directly and indirectly from the outcomes of the research conducted by Autism CRC, thereby fulfilling the objective of embracing inclusion and diversity.



Report from the Chair



The first year of operation of the Cooperative Research Centre for Living with Autism Spectrum Disorders (Autism CRC) has been both exhilarating and exhausting! In just a few months we have gone from a dream and a detailed plan on paper to a living, breathing, multifaceted national research centre, generating cutting edge research projects and engaging people and communities across the nation.

We have carefully built a team of people to guide us through our work, from our committed Board of Directors, to our Executive Staff, Program Directors and Project Leaders. Our work to transform lives through high quality collaborative research has now truly begun.

While the results of our research projects may take some time to be published, the results of our engagement with the autism community are already bearing fruit. It is exciting to watch the two-way exchange of information and data between people from such diverse backgrounds working together for a common purpose. Through new ways of connecting people we are constantly refining the work we are doing to make it more relevant and easier to translate to real life situations across a range of applications and environments.

Best of all, it is only just beginning. As you read through this first Annual Report, I hope that you feel through our stories, some of the passion that is driving our Board, staff, researchers and participants as we work together to make these projects come to life. The statistics, and figures show we are well on our way to building a strong, sustaining organisation. Working together in both traditional and in new ways, we can make a real difference to many lives.

I sincerely thank you all for your support and patience through the challenging 'start up' phase, and while we have been building the structural foundations for all that lies ahead.

A handwritten signature in blue ink that reads "Judy M Brewer".

Judy M Brewer
Chair



Report from the CEO



I am pleased to provide you with the 2013/2014 Annual Report of Autism CRC Ltd. It has been my privilege to serve as the inaugural CEO and to have been one of the initial three Directors of Autism CRC Ltd.

It has been a highly successful first year of operation with the company established, 12 Essential and 36 Other Participants engaged and two research investment rounds conducted. We are now well on our way to achieving our mission of transforming the lives of people with autism through end-user driven research. Investment in our three research programs has led to the approval of 29 research projects in a world first collaboration, on a scale never seen before in Australia. In our first year, we have approved investments of \$8.1 million and our Participants have committed \$32.8 million in-kind across these projects.

We are now engaging with our end-user community through an expert online presence. The website, social media and regular newsletters are ensuring people are able to get involved with our research projects as scholars, research subjects or volunteers. This level of engagement is a clear indication that the work of Autism CRC is both timely and critical to making a real difference in the lives of people with autism, their families and the professionals who work with them.

Unfortunately due to unexpected ill health in August 2013, I needed to take extended period of leave to undergo extensive chemotherapy treatment. In the best interests of the company, I stepped down from the CEO role in November 2013. I am very grateful to the Board and Autism CRC staff for their support during this challenging time.

My role as Director of Research and Education continues to provide me with the opportunity to work in a pivotal position within the team in bringing the CRC to fruition. Having been involved with the bidding team, as Co-Chair since 2011, it is very exciting to see the team's plans and dreams for autism research across the lifespan take shape.

Never before has there been such a large injection of research funding into autism research in Australia. Never before have so many researchers from various universities and research institutes and end-user organisations collaborated to envision an eight year blueprint for research to transform the lives of individuals with autism. Never before have we had the opportunity or capacity to build a workforce of young, intelligent, researchers dedicated to the betterment of the lives of individuals with autism. Autism CRC is in the enviable position of being able to make a difference to the lives of many Australians through research findings that can be translated and utilised in both practice and policy.

I look forward to working closely with Mr Andrew Davis, Autism CRC's new CEO, to achieve what we have ambitiously set out to do.

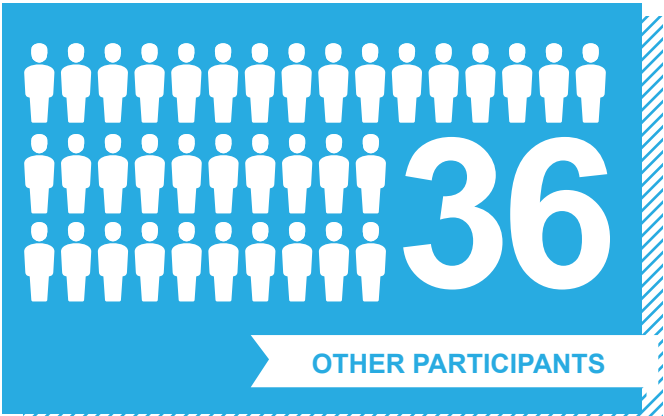
A handwritten signature in black ink that reads "Sylvia Rodger".

Sylvia Rodger

Director of Research and Education



Eight Year Overview



1 Highlights 2013/2014

Timeline of establishment



1.1 Research and Development

- First investment round completed in December 2013 – 17 strategic projects with approved funding of \$6.5 million and \$22.4 million in-kind contribution by participants.
- Second investment round undertaken in June 2014 – 12 projects with approved funding of \$1.6 million and \$10.4 million in-kind contribution by participants.
- Autism CRC Biobank to be established at the Wesley Research Institute, being the first Australian collection of biological material from individuals with autism and their parents.
- Co-funding received from Department of Social Services in 2014 investment round for research on diagnostic practices.
- Two papers submitted for publication.

Quotes from Autism CRC's first publications:

"The median family cost of ASD was estimated to be AUD \$34,900 per annum with almost 90% of the sum (\$29,200) due to loss of income from employment. For each additional symptom reported, approximately \$1,400 cost for the family per annum was added."

"A delay in diagnosis was associated with an indirect increased financial burden to families. Early and appropriate access to early intervention is known to improve a child's long-term outcomes and reduce lifetime costs to the individual, family and society."

Horlin C., Falkmer M., Parsons R., Albrecht M. A., Falkmer T. (2014) 'The Cost of Autism Spectrum Disorders', PLOS ONE PLOS One, 9(9):e106552. doi:10.1371/journal.pone.0106552.

"Inherited variants from parents with a broader autism phenotype and de novo variants were found to be significantly associated with ASD... Our results provide an important step forward in the molecular characterization of ASD with potential for developing a tool to analyse the pathogenesis of individual affected families."

An, J. Y., Cristino, A. S., Zhao, Q., Edson, J., Williams, S. M., Ravine, D., Wray, J., Marshall, V. M., Hunt, A., Whitehouse, A. J. O. and Claudianos, C. (2014) 'Towards a molecular characterization of autism spectrum disorders: an exome sequencing and systems approach', Translational Psychiatry, 4 : e394.1-e394.9.

1.2 Education and Training

- Seven PhD students approved with CRC full or top up scholarships.
- PhD supervision advisory groups, including end-users with autism, established.
- The Autism CRC Lab to Life program and other educational activities developed for PhD and postdoctoral fellows. This program will ensure that graduates and fellows will be well-rounded scientists and well-informed regarding autism across the lifespan.

1.3 Financial

- Participant cash contributions totalling \$4.1 million received in 2013/14.
- Total in-kind contributions associated with first two research investment rounds delivered. This is expected to be \$32.8 million, approximately 48.6% of total initially anticipated for the entire CRC program.

1.4 Communications

- Online presence built at autismcrc.com.au with over 2,000 users a month.
- Facebook presence established with a building community.
- Intranet developed as a portal for participants, researchers and staff.
- Regular newsletters to participants, autism community, researchers and staff delivered.

1.5 Utilisation, Commercialisation and Engagement

- Requirements established for at least one end-user participant in all CRC research projects, to facilitate translation of research.
- 21 end-users including 11 SMEs participating in research projects in the 2013 investment round.
- 23 end-users including 14 SMEs participating in research projects in the 2014 investment round.
- Wholly-owned subsidiary, Social Skills Training Pty Ltd, to be established to commercialise Secret Agent Society Program for social and behavioural development in school children.
- 19 SMEs engaged in Round 1 and 2 research projects.



2 Structure and Governance

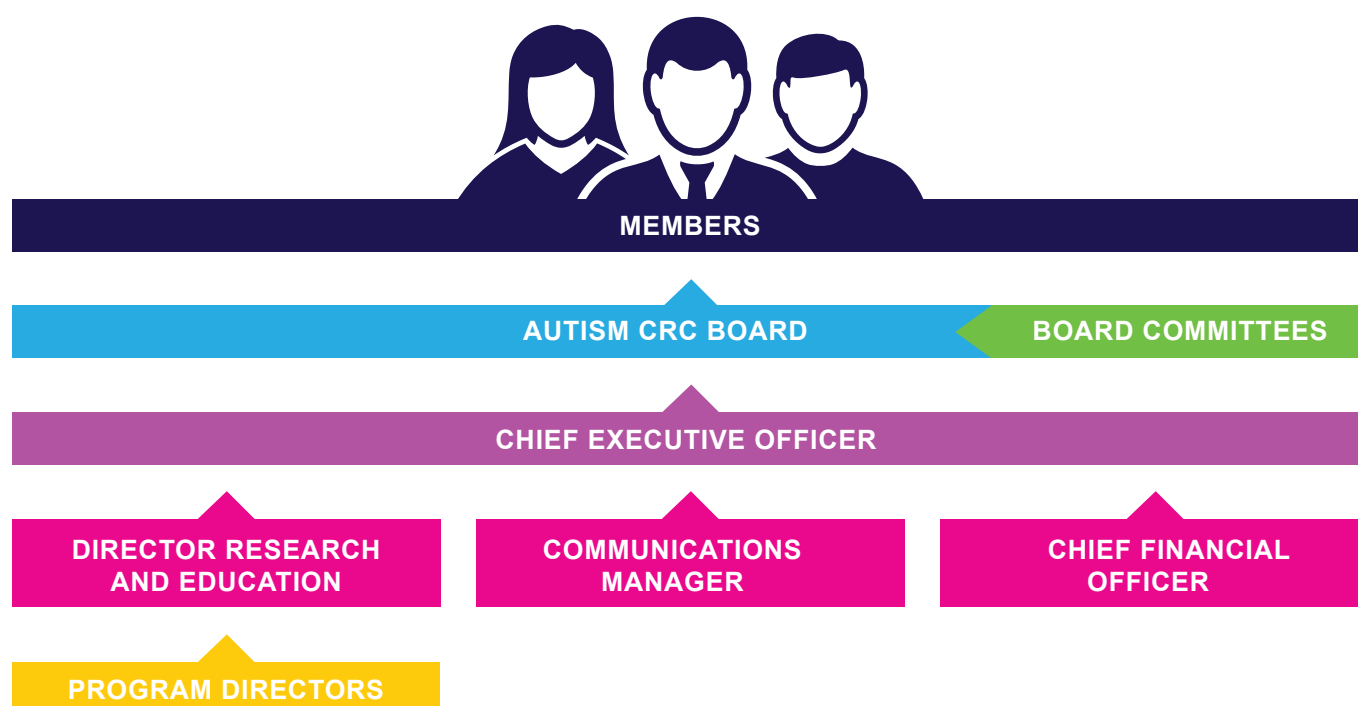
2.1 Structure

Autism CRC Ltd was established in March 2013 as a company limited by guarantee. The governance and management structure promote effective cooperation between the participants and end-users, which ensures translation-focused research and development.

Autism CRC ensures this by:

- Including significant industry representation, including end-user representation, on the Board of Autism CRC and its various committees, along with representatives of research participants.
- Involving end-users directly in Autism CRC research and development as participants, enhancing project design and the applicability and uptake of outcomes.
- Engaging the three Program Directors heavily with end-users and in the management of Autism CRC activities.

Organisation Chart



2.2 Essential Participants

The Essential Participants of Autism CRC Ltd are:



*All Essential Participants are members of the Company except for the Queensland Department of Education, Training and Employment.

A full list of Participants in the Cooperative Research Centre for Living with Autism Spectrum Disorders is given in Appendix 1.



2.3 Autism CRC Board



Front (l-r) Kristina Frawley (Company Secretary), Robert van Barneveld, Sylvia Rodger (Inaugural CEO), Judy Brewer, Adrian Ford
Back (l-r) Carole Green, Ian Harris, Garry Allison, Paul Vincent, Paul Field, Scott Reading, Vicki Pattermore, Shirley Lanning.

The Autism CRC Board is accountable to the Members of Autism CRC Ltd (the Company), Participants of the Living with Autism Spectrum Disorders CRC and the Australian Government for the operations and affairs of the CRC. The Board is responsible for decisions relating to Autism CRC Ltd strategy, the investment of funds, the research program, the translation of research outcomes to application, and the overall management of the CRC.

The present Board consists of:

- an Independent Chair;
- five other Independent Directors, including the Deputy Chair;
- two Nominee Directors representing end-user Participants; and
- three Nominee Directors representing research Participants.

A number of the Directors are also active members of the broader Australian autism community.

The Board met ten times during the reporting period. Now that Autism CRC has been established, and its management team and operations are in place, it is anticipated that the Board will meet every two months in 2015.

The Board members bring skills and experience across a range of disciplines of direct relevance to the goals and operations of Autism CRC Ltd, including:

- service provision to the autism community;
- research management and disability research;
- intellectual property commercialisation;
- advocacy and policy development in the disability sector; and
- governance and management of commercial ventures, CRC and not-for-profits.



Ms Judy Brewer *Independent Chair*

BBus (Public Admin), GDipTax, GAICD

Judy is a regular speaker and writer on issues relating to families caring for family members with special needs. As a parent of a young adult with autism spectrum disorder, she has been actively involved in a number of autism and carer organisations and is a life member of Autism Spectrum Australia, convenor of the Autism Future Leaders program and founder of Autism Aspergers Advocacy Australia. In 2013, she was a recipient of the Asia Pacific Autism Award

Alongside these organisational roles, Judy has also been appointed to a range of Federal and State Government Committees, including as Chair of the National Family Carers Voice, panel member for the 2004 Review of the Disability Carer Allowance, the 2005 Ministerial Advisory Group on the reforms to Disability Trusts, the Victorian Government Autism State Plan Working Party 2007/08 and the DEEWR Advisory Committee for the Positive Partnerships program.

Before autism became such a key part of Judy's life, she worked for many years in tertiary education and political research with both State and Federal Parliamentarians. She has been a Board member or Chair of numerous organisations, including philanthropic foundations. Judy lives on a farm in north east Victoria and is the owner/manager of Grossotto Poll Herefords.

Prof Robert van Barneveld *Independent Deputy Chair*

BAgrSc(Hon), PhD, RAnNutr, FAICD

Robert is an experienced director of small and large businesses, not-for-profits, peak bodies and ASX Top 300 companies which comprise partnerships, proprietary limited companies, incorporated associations, companies limited by guarantee and publically listed entities. He has extensive experience in corporate governance, research commercialisation, research management and government liaison at state and federal levels.

He is immediate past President of Autism Queensland Inc. and is familiar with the needs of families and carers of people with autism. His daughter was initially diagnosed with autism but later re-diagnosed with Rett Syndrome.

He is a Director of the Pork CRC Ltd, has led three successful CRC bids, including the Autism CRC bid, has been involved in the establishment and transition of CRCs, and has worked as a researcher within the Pork, Aquaculture and Aquafin CRCs.

Robert is an Adjunct Professor within the School of Environmental and Rural Science at the University of New England and has received numerous presentation, excellence, and research awards.

Prof Garry Allison *Nominee Director*

BEd(Hons), BAppSc (Physio)(Hons), MEd, PhD

Garry has experience in motor control and learning during recovery and rehabilitation of individuals with neurological injury and elite athletes.

He has research and practical experience with inter-professional health care and educational delivery through his teaching degree and subsequently health systems research and funded research.

He is currently Dean, Research and Graduate Studies at Curtin University Faculty of Health Sciences, and Professor of Neuroscience and Trauma Physiotherapy. These positions enabled him to develop extensive experience in research management, RHD student issues, research consultancy management, and partnerships with external stakeholders, and contractual obligations.

He has significant experience with strategy, risk and governance both within the tertiary sector for research conduct and within professional associations and government bodies.

Mr Paul Field *Independent Director*

BA(Hons), MA, FAICD

Paul brings skills and experience in the management and commercialisation of life science research, including research into biomarkers and therapeutic candidates for neurological disorders and intellectual disabilities.

He is currently Senior Investment Specialist at the Australian Trade Commission (Austrade), facilitating foreign direct investment into the advanced manufacturing and scientific sectors in Australia.

He was previously Executive Chairman of Bio-Link, a business development company which worked with biotech companies, research institutes and universities to facilitate international licensing deals. Paul has also consulted to charities and medical research institutes on issues of strategy and corporate governance. Before Bio-Link, he held senior management positions at ATP Innovations, the University of Technology, Sydney (UTS), Cellabs Diagnostics and Itochu Corporation.

Mr Adrian Ford *Nominee Director*

BSocStu, FAICD

Adrian is the Chief Executive Officer and Company Secretary of Autism Spectrum Australia (Aspect), Australia's largest national service provider focusing on people with autism and their families. This provides him with first-hand experience of the needs, issues, concerns and research priorities of people with autism and their families/carers.

He has extensive experience with not-for-profit boards, governance structures and strategic planning, risk management, finances, HR and policy framework. He has worked with governments at all levels and autism organisations, and developed partnerships with disparate organisations with a common interest and commitment.

He chairs the national consortium that auspices Positive Partnerships, a program that supports school aged students with autism by providing professional training to teachers and workshops to parents to better support their child in school.

Adrian is also a Director of the Australian Advisory Board on ASD (AABASD), the national peak body for autism in Australia and has experience with the roll out of the National Disability Insurance Scheme (NDIS) in NSW.

Ms Carole Green *Independent Director*

BAppSc (Computing), GDipCorpGov, GDipEd, MIT, MBA, Certificate of Teaching, GAICD

Carole has held positions within a number of Cooperative Research Centres including Strategic Manager, Wound Management Innovation CRC, as well as Chief Operating Officer, Construction Innovation CRC. She has also been Company Secretary within CRC contexts.

She has experience in establishment, strategic direction, implementation of processes and systems within CRCs, and exploitation of research outputs. Carole also has more than 15 years' experience working with tertiary education, government, and industry across science, health, education, business, and IT.

She has a wealth of experience in complex environments with multiple stakeholders, establishing and operating business structures, quality assurance and risk management.



Mr Ian Harris *Nominee Director*

BSc(Agriculture), GDipAdmin, MEd, GAICD

Ian has specific expertise in IP commercialisation, research and development management, risk analysis and corporate governance, as well as broad experience with ARC Centres of Excellence and CRCs, including membership of advisory boards.

He is currently Director Research Partnerships (formerly Research and Innovation Division) within the Office of the Deputy Vice Chancellor Research at The University of Queensland. Through this role he has developed strategic research partnerships with industry and government, as well as experience with corporate management of CRCs, commercialisation of research and management of research legal services.

His previous appointments include Chief Operating Officer and Chief Executive Officer in ARC Centres and a start-up company within UniQuest. He has held a number of Directorships and Executive Officer roles at various universities and spent three years managing a universities aid program in the Philippines.

Dr Shirley Lanning *Independent Director*

BSc(Biological Sciences)(Hons 1), PhD(Microbiology), FAICD

Shirley has over 20 years' senior management experience in commercial and not-for-profit organisations in UK and Australia, focusing on corporate affairs, business development, marketing and communications, and general management in the area of science and technology.

She has served as a non-executive Board Director of a number of not-for-profit organisations, including NanoVentures Australia, Nanotechnology Victoria, the Pig Research and Development Corporation and the Australian Biotechnology Association (now AusBiotech), and as a Member of Government Advisory Councils, including the Federal Government's Advisory Council on Intellectual Property and the Victorian Cancer Agency Consultative Council.

She was the inaugural Executive Director of the UK BioIndustry Association. Dr Lanning has been involved with the CRC Program for many years and has served as Federal Government Visitor to the CRC for Viticulture and the CRC for Cellular Growth Factors. She is a Fellow of the Australian Institute of Company Directors.

Dr Vicki Pattemore *Nominee Director*

BSc(Hons 1), Certificate Small Business Management, PhD(Terrestrial Ecology), GAICD

Vicki brings extensive experience in research management and policy, major bid development, risk analysis and governance, and government liaison to the Autism CRC Board.

She has coordinated Griffith University's involvement in 13 CRCs and has helped develop a number of CRC bids. Vicky has also served on the boards of several CRCs, including Tropical Environment and Management and eWater Ltd, as well as the Australian Canopy Crane Company Ltd. She was the inaugural Chair of the Participants' Forum for the Desert Knowledge CRC.

She has experience with CRC establishment and the setting up of governance policies and processes, and works regularly in this area for both incorporated and unincorporated research collaborations.

Mr Scott Reading *Nominee Director*

MCom, MBus(Logistics Management), MAICD

Scott is a Founding Director of the AEIOU Foundation for Children with Autism where he is currently an active board member. He has been an advocate for children with epilepsy and has been a management representative for Nutrimerics charity E3.

He understands first-hand the daily challenges that autism brings through his son William (9), who has been diagnosed with low functioning autism.

Scott has over 21 years in senior management and leadership roles in the retail, media, direct selling and small business sectors. He has held senior management roles with national and international companies, including Coles Myer, Gordon & Gotch, Sara Lee, Tupperware and Nutrimerics.

He has experience in sales, marketing, finance, operations, IT, events management, CRM and fundraising initiatives. Scott also brings extensive experience in securing funding and developing key government relationships to the Autism CRC.

Mr Paul Vincent *Independent Director*

BBus (Acc), FCA, GAICD

Paul is a Chartered Accountant and has been a Director of Vincents Chartered Accountants since 1989. He has extensive experience in commercial litigation, providing evidence for criminal matters (fraud, family law property settlements), professional negligence actions, corporate governance and directors' duty breaches. Paul also mediates and arbitrates financial disputes.

His accounting experience covers audit, insolvency, management, taxation and general accounting.

He is a regular presenter at conferences across Australia on a range of forensic accounting topics including, commercial dispute resolution, quantifying damages in commercial disputes, fraud detection and prevention and proceeds of crime related topics.

Ms Kristina Frawley *Company Secretary*

MCom, CPA, GAICD

Kristina is Chief Financial Officer (CFO) of the Company, and was appointed Company Secretary on 22 July 2013.

Directors have been in office since the beginning of the financial period to the date of this report unless otherwise stated.

An interim Board, comprising Professor Sylvia Rodger, Ms Judy Brewer and Professor Robert van Barneveld, was appointed with the formation of the Company on 1 March 2013 through to the first Annual General Meeting, held on 29 July 2013, when the present Board of Directors was appointed. Professor Rodger resigned as a Director on 29 July 2013.



2.4 Board Committees

The Board has established a number of Committees to assist in the execution of its duties and to allow detailed consideration of various issues. All matters determined by these Committees are submitted to the Board of Autism CRC Ltd for ratification.

Research and Development Committee:

The Research and Development Committee is comprised of Essential Participant nominees and members appointed by the Board. The Committee provides a forum for consultation among the Essential Participants, a point of interaction between the Essential Participants and the Board, and guidance and recommendations to the Board in relation to research and development undertaken within the CRC.

During the reporting period, the Research and Development Committee met twice and consisted of:

- Professor Robert van Barneveld (Chair);
- Mr Paul Field;
- Ms Penny Beeston (Autism Qld);
- Dr Jessica Paynter (AEIOU);
- Dr Debra Costley (ASPECT);
- Dr Sharon Mullins (Qld DETE);
- Professor James Semmens (Curtin University);
- Professor Jacqueline Roberts (Griffith University);
- Associate Professor Cheryl Dissanayake (La Trobe University);
- Professor Michael McGuckin (Mater Medical Research Institute);
- Professor Wendy Patton (Queensland University of Technology);
- Professor Virginia Slaughter (University of Queensland);
- Professor Valsamma Eapen (University of New South Wales); and
- Professor Murray Mayberry (University of Western Australia),

with Professor Sylvia Rodger (Director of Research and Education), Professor Andrew Whitehouse (Program 1 Director), Professor Suzanne Carrington (Program 2 Director), Professor Torbjorn Falkmer (Program 3 Director), Ms Kristina Frawley (CFO) and Mrs Robyn Synnott (Committee Secretary) in attendance.

Commercialisation Committee

The Commercialisation Committee provides strategic advice and oversight of commercialisation and intellectual property management to the Board. This Committee reviews CRC research outcomes to identify new commercialisation opportunities, provides strategic direction on commercial activities and identifies opportunities for partnerships with the commercial sector, as well as making recommendations in relation to the protection of intellectual property.

During the reporting period, the Commercialisation Committee met three times and consisted of:

- Mr Paul Field (Chair);
- Mr Paul Vincent;
- Mr Scott Reading; and
- Professor Robert van Barneveld,

with the CEO, Director of Research and Education, CFO and Mrs Robyn Synnott (Committee Secretary) in attendance.

Audit and Finance Committee:

The Audit and Finance Committee assists the Board in its oversight of the integrity of financial reporting, internal control structures, audit functions and also compliance and risk management systems relating to the finance and audit functions.

During the reporting period, the Audit and Finance Committee met four times and consisted of:

- Mr Paul Vincent (Chair);
- Mr Ian Harris; and
- Mr Scott Reading,

with the CEO and CFO, as Secretary, in attendance.

Remuneration, Nominations and Selection Committee:

The Remuneration, Nominations and Selection Committee assists the Board in fulfilling its corporate governance responsibilities in regard to the selection and appointment of Directors to the Board and in the effective discharge of its responsibilities for:

- Appointment and review of performance of the Chief Executive Officer (CEO), and overview of the Executive Team
- The system of remuneration and benefits for the Executive Team.

During the reporting period, the Remuneration, Nominations and Selection Committee met twice and consisted of:

- Ms Judy Brewer (Chair);
- Ms Carole Green;
- Dr Shirley Lanning; and
- Professor Robert van Barneveld,

with the CEO and CFO, as Secretary, in attendance.

Governance and Risk Committee:

The responsibilities of the Governance and Corporate Risk Committee (GCRC) are to ensure appropriate policies and procedures are in place to underpin best practice governance and to identify and manage corporate risk for the Company.

During the reporting period, the Governance and Risk Committee met twice and consisted of:

- Ms Judy Brewer (Chair);
- Mr Adrian Ford;
- Dr Vicki Pattemore; and
- Professor Garry Allison,

with the CEO and CFO, as Secretary, in attendance.

2.5 Autism CRC Management Team

Name	Role	Organisation
Prof Sylvia Rodger*	Inaugural CEO / Director of Research & Education	Autism CRC
Ms Kristina Frawley	CFO and Company Secretary	Autism CRC
Prof Andrew Whitehouse	Program 1 Director	University of Western Australia
Prof Suzanne Carrington	Program 2 Director	Queensland University of Technology
Prof Torbjorn Falkmer	Program 3 Director	Curtin University

*Mr Andrew Davis commenced as CEO 15 September, 2014.



3 Report on Activities

3.1 Research and Development

The Cooperative Research Centre for Living with Autism Spectrum Disorder is undertaking three major research programs:

RESEARCH PROGRAM 1

A Better Start through
Better Diagnosis

RESEARCH PROGRAM 2

Enhancing Learning
and Teaching

RESEARCH PROGRAM 3

Finding a Place
in Society

Autism CRC is on target to meet its research outputs. To date there have been no technical or scientific impediments impacting on research progress. At this early stage of the CRC's life, no changes to research directions are proposed.

Autism CRC invests in two types of research projects.

- Strategic Projects which relate to specific Autism CRC Ltd Milestones and must involve at least two, preferably more, CRC Participants, including end-users; and
- Innovation Projects which provide seed funding for innovation consistent with the Autism CRC Ltd's overall objectives, with a maximum investment of \$50,000 and maximum term of one year. These projects seek creative and novel ideas that will assist in meeting CRC research objectives.

Research project proposals are assessed by the Research and Development Committee, with recommendations made to the Board for approval. Project progress, including assessment of project milestone performance, schedule, expenditure and risks, is monitored via a number of mechanisms:

- six monthly project milestone and project cash reporting and quarterly in-kind reporting;
- the Director of Research and Education reporting to the Autism CRC Board on research project execution status, progress and exceptions;
- the Research Executive meeting three times a year to review progress and investment priorities;
- regular meetings between the Director of Research and Education and Program Directors.

Autism CRC Biobank

The Autism CRC Biobank is being established at the Wesley Research Institute. An essential part of Program 1, this will hold and manage the first Australian collection of biological material from individuals with autism. It will consist of the bloods and DNA of children with autism and their parents. It will be a private collection within the Wesley Research Institute Tissue Bank.

This important initiative is overseen by two management Committees. The Biobank Operations Committee oversees the management and collection of bloods and clinical data at four sites in Perth, Melbourne, Sydney and Brisbane. The Biobank Access Committee oversees and approves specific requests from internal and external researchers to access the bio-specimens and associated data.

Research Program 1- A Better Start through Better Diagnosis

Program Director – Professor Andrew Whitehouse

BSc (Speech Pathology), PhD (Psychology).



This program focuses on improving the validity, precision, timeliness and reliability associated with diagnosis of autism by combining advanced behavioural analysis (developmental surveillance) from an early age with novel and existing biological markers.

The primary goal of Research Program 1 is to harness existing knowledge of autism behaviour, develop tools and improve training for end-users to accurately diagnose 50% of children with autism prior to their second birthday and over 70% by their third birthday. A secondary goal of Research Program 1 is to incorporate breakthroughs in biological research to identify subtypes of autism, and improve understanding of the most efficacious interventions that match these subtype profiles.

In the 2013 Investment Round, the following projects were approved in Program 1 and have commenced.

Program 1 Projects

Project	Short Title	Years	Lead Investigator/Institution	Project Funds	In-Kind Value
1.001RC	Program 1 Base Resources #	2013-17	Andrew Whitehouse/UWA Cheryl Dissanayake/La Trobe Valsa Eappen/UNSW Honey Heussler/MMRI	\$2,057,500	\$4,095,500
1.002RC	Creation of Autism Biobank	2013-16	Andrew Whitehouse/UWA	\$151,700	\$750,757
1.003RC	Genetic screening of ASD (Phase 1)	2013-17	Charles Claudianos/UQ	\$537,073	\$1,845,427
1.004RC	Graduate Certificate	2013-16	Murray Maybery/ UWA	\$120,000	\$556,458
1.005RC	Developmental Surveillance SACS-R	2013-17	Cheryl Dissanayake/La Trobe	\$315,974	\$1,756,341
Total Program 1				\$3,182,247	\$9,004,483

Base resources refers to postdoctoral fellows, research assistants in each of four sites who are working together on projects 1.002RC, 1.003RC, 1.005RC.

Performance against activities

Output 1.1 A behavioural surveillance tool to enable correct diagnosis of at least 50% of children with ASD before 2 years and at least 70% by 3 years.

The Social, Attention and Communication Scale-Revised (SACS-R) tool will be used by community-based primary care professionals (including paediatricians, GPs, Maternal and Child Health, allied health staff and early childhood educators) to identify children in need of further assessment for autism.

Project 1.005RC has commenced and will address this output with key focus in Victoria and Western Australia. A PhD scholar has been appointed and a postdoctoral fellow is in place. Ethical clearance has been gained for the two major trial sites. Training of community-based professionals is being planned in four states (Victoria, NSW, Queensland and WA).

Output 1.2 Integrated diagnostic protocol (IDPA) and ASD software analysis tool to enable better diagnosis of ASD and prediction of developing ASD.

The development of the protocol and autism software analysis tool will be based on the following process:

- collection of detailed behavioural and biological (genetic and biochemical) information on autism families from four states to form an Autism CRC Biobank;
- research into potential genetic and biochemical markers for ASD;
- refinement of the autism software analysis tool (AXAS™) for predicting genetic risk for autism within individual genotypes; and
- development of IDPA by combining with SACS-R to provide a world-first approach for increasing the robustness (sensitivity, validity, specificity, reliability) of early autism diagnosis.

Two projects have commenced and will address this output – Projects 1.002RC and 1.003RC. Ethical clearance has been received for these projects in four out of five sites, with approval at the final site imminent. Postdoctoral staff in each site have been employed and all behavioural/clinical



data methods have been harmonised across sites. Two committees – the Biobank Operations and Biobank Access Committees have been set up and are meeting regularly to oversee the data collection processes, quality assurance, and management of the Autism CRC Biobank (Operations) and data access protocols and material transfer agreements (Access). Both committees report to the Board on a six monthly basis. The Access Committee also has representation from an individual with autism and an expert in Biobanks to ensure these perspectives are incorporated. Autism CRC Ltd is in the final stage of contract negotiations with the Wesley Research Institute Tissue Bank for the permanent storage of biospecimens (Blood, DNA, RNA) and data management services so that data and specimens are stored and linked together in one place.

With respect to milestone R.1.2.01, participant recruitment and data collection for the Autism CRC Biobank, this is in progress in two of the four states (WA and Victoria) with the other two states ready to commence.

With respect to Genetic Screening Project 1.003RC, a postdoctoral fellow is in place, a PhD scholar has been shortlisted and the research pipeline from data procurement to analysis and storage has been finalised and piloted with extremely positive outcomes.

Output 1.3 Identification of biological subtypes of ASD.

Using the data from the six Autism Specific Early Learning and Care Centres (ASELCCs), a behavioural profile will be matched with that of neurocognitive parameters and genotypes to develop homogeneous subtypes of autism. The autism subtypes identified will be matched with the early intervention outcomes to ascertain the most efficacious interventions that yield the best outcome for each subtype

profile. By following up cohort participants as they transition into school programs, it is possible to develop prognostic indicators of outcomes as they relate to each of the genotype, neurocognitive (endophenotype) and clinical (phenotype) profiles. The identification and validation of accurate subtypes of autism will expedite decision making about early intervention strategies.

This output was not addressed in the first year, however a project proposal regarding this output was submitted and approved in the 2014 Investment Round.

Output 1. 4 Implementation of a Graduate Certificate for Autism Diagnosticians and education of 12 PhDs, 5 postdoctoral fellows and generation of 72 scholarly publications.

The content for the Graduate Certificate in Autism Diagnosis (GCAD) will be based on findings from Research Program 1, Outputs 1.1 and 1.2. It will be a four unit course offered to Speech Pathologists, Psychologists and Paediatricians to increase their skills for the diagnosis of autism.

The curriculum framework for the Graduate Certificate in Autism Diagnosis has been approved at the University of Western Australia, with key staff in place working on curriculum content ready for a July 2015 commencement. A Steering Committee has been established including members from sites around Australia.

Four postdoctoral fellows and one PhD scholar have commenced in Program 1 projects. One publication has been produced to date.

A second Investment Round was considered by the Board in June 2014, allowing for the following projects in Program 1 to be approved.

Program 1 Projects	Project Leader	TOTAL Cash	TOTAL In-kind
Strategic:			
Early Intervention Program	Valsamma Eapen (UNSW)	\$480,450	\$2,850,850
Family Support Program	Josephine Barbaro (LTU)	\$54,140	\$214,840
Diagnostic Practices	Lauren Taylor (UWA)	\$99,998	\$457,000
Total Program 1 Strategic		\$634,588	\$3,522,690
Innovation:			
Assessing the biological significance of Candidate Autism Genes	Brian Key (UQ)	\$50,000	\$503,600
Brain cells transformed from blood: a cell model for investigating autism - BrainsTorm	Paul Dawson (MMRI)	\$40,150	\$174,000
Transcriptome analyses of human autism brain tissue	Irina Voineagu (UNSW)	\$50,000	\$333,000
Total Program 1 Innovation		\$140,150	\$1,010,600
Total Program 1 Projects		\$774,738	\$4,533,290



Program 2 - Enhancing Learning and Teaching

Program Director – Professor Suzanne Carrington

DipTeach, BEd, MEd, PhD



Research Program 2 will enable educators, therapists, carers, families, and the general community to effectively and successfully respond to the unique learning needs of students with autism. By identifying appropriate educational environments and programs, students with autism will have the best chance of social, behavioural

and academic success at school. Research Program 2 will research and develop evidence-based teaching programs and tools tested in classrooms to optimise the learning and educational environments for students with autism. Student experiences will be observed through a longitudinal study and subtypes of autism identified in Research Program 1 will be validated with participants in this study.

We aim to transform the capacity of professionals and parents to effectively accommodate the needs of students with autism at school. Three training packages will be generated for a wide range of end-users and disseminated on the 'ASD Connect Hub'.

In the 2013 Investment Round, the following projects were approved in Program 2.

Program 2 Projects

Program 2	Short Title	Years	Lead Investigator/Institution	Project Funds	In-Kind Value
2.006RC	Program 2 Base Resources#	2013-2017	Suzanne Carrington/QUT	\$480,000	\$992,000
2.007RC	Trajectory Study	2013-2017	Jacqui Roberts/Griffith	\$403,450	\$2,406,400
2.008RC	Secret Agent Society Classroom	2013-2017	Kate Sofronoff/UQ	\$149,924	\$417,000
2.009RC	ASD Educational Needs Analysis	2013-2014	Beth Sagers/QUT	\$40,000	\$295,000
2.010RC	Overcoming written expression difficulties	2013-2017	Jill Ashburner/AQ	\$176,680	\$1,467,120
2.011RC	Helping students stay on task & move between tasks	2013-2017	Jill Ashburner/AQ	\$164,684	\$1,479,516
Program 2 Total				\$1,414,738	\$7,057,036

Base resources refers to the School Coordinator who is working across all Program 2 projects.

Performance against activities

Output 2.1 Evidence-based programs to optimise the learning environment ensuring successful social, behavioural and academic outcomes for students with ASD.

Research will focus on the development and evaluation of:

- strategies to enhance students' capacity to process instructions, express knowledge, and engage in/transition between learning tasks;
- methods of transition between and within classrooms, and into and across the school;
- programs to facilitate students' transition between educational settings (primary to high school);
- whole of class and whole of school social emotional programs.

In the 2013 Investment Round, projects were approved and have commenced addressing written expression difficulties (2.010RC) and transitioning between tasks (2.011RC). Milestone R2.1.01 is in progress with 10 schools being identified to be involved in the Classrooms of Excellence sites. The classrooms and teachers will be selected over the coming months.

Output 2.2 Evidence-based tools and protocols for supporting students with ASD with high impact social, emotional and behavioural needs.

Research and development under this output will be conducted via two projects: Early Years Behaviour Support Project (EYBSP) and Middle Years Behaviour Support Project (MYBSP). The projects will focus on developing innovative assessment tools, support protocols and technologies to enable social emotional wellbeing, school connectedness, and behavioural regulation.

Additional outcomes include:

- Tele-Classroom Consultation (TCC) approaches for regional teachers and students with autism with emotional/behavioural challenges will be developed, tested and evaluated in 10 schools; and
- School connectedness programs to promote resilience and well-being will be developed and evaluated in 10 schools.

This output was addressed in the 2013 Investment Round through investment in the Survey of Australian ASD



Educational Needs Analysis project and subsequently two projects have been approved in the 2014 Investment Round with neither having yet commenced. With respect to milestone R2.2.01, The Educational Needs Analysis ASD Survey was finalised by the end of the reporting period and subsequently has been launched with excellent response rates to date from parents, teachers, students and therapists. Milestone R2.2.02 is in progress with the organisations and key personnel having been identified, however, the exact team members are in the process of being determined.

Output 2.3 Three training packages to increase skilled, confident teachers and support personnel capable of educating a spectrum of ASD students.

This output includes the development of training packages that will initially be trialled by professionals (eg, Secret Agent Society-Whole Classroom) in order to build capacity and inform development of the penultimate training packages.

The following three training packages with 4 modules in each package for education professionals, GPs, paediatricians, psychologists, therapists and undergraduate students will be developed, tested, evaluated and disseminated through the ASD Connect Hub.

These packages have not yet been developed and are awaiting the findings of research projects prior to their development.

Output 2.4 Validation of ASD subtypes (Output 1.3) and their predictive value for long term outcomes for children with ASD through a longitudinal study.

This longitudinal study involves biennial assessments of two cohorts of young children: cohort 1 and 2 will each comprise 125 participants. Cohort 1 will be recruited at 4-5 years and cohort 2 recruited at 9-10 years. There will be 3 points of assessment which will include collection of demographic and education intervention data.

The longitudinal trajectory study (2.007RC) has commenced with key sites and agencies identified and PhD scholars interviewed. The first reporting milestone R2.4.01 has been met, specifically the battery of appropriate assessments for the longitudinal trajectory study has been agreed to, allowing data collection to commence.

Output 2.5 This output will train 18 PhD students, employ 6 postdoctoral fellows and generate 60 scholarly publications.

One PhD Scholar commenced during the reporting period and one has commenced subsequently with another appointed and due to commence early 2015 and a fourth under consideration.

A second Investment Round was considered by the Board in June 2014, allowing for the following projects in Program 2 to be approved.

Program 2 Projects	Project Leader	TOTAL Cash	TOTAL In-kind
Strategic:			
Early Years Behaviour Support Project*	Beth Sagers (QUT)	\$500,765	\$3,289,399
Improving classroom acoustics	Jill Ashburner (AQ)	\$340,050	\$1,232,950
School Connectedness Project (SCP)*	Ian Shochet (QUT)	\$478,314	\$1,083,498
Total Program 2 Strategic		\$1,319,129	\$5,605,847
Innovation:			
Emergent literacy performance of children with ASD	Marleen Westerveld (Griffith)	\$49,746	\$146,724
Improving School Functioning by Reducing Anxiety	Jeneva Ohan (UWA)	\$49,920	\$266,700
Using LEGO Robotics interests to improve interactions	Jay Hobbs (Brisbane Catholic Ed)	\$45,750	\$252,000
Total Program 2 Innovation		\$145,416	\$665,424
Total Program 2 Projects		\$1,464,545	\$6,271,271

*Under review



Program 3 - Finding a Place in Society

Program Director – Professor Torbjorn Falkmer

BSc(Occupational Therapy), MSc(Teaching), PhD (Medicine).



Research Program 3 focuses on the transition from school to further education and/or employment with the ultimate goal being to assist people with autism to find a valued place in society. Tools will be developed and implemented to identify the key attributes of

individuals with autism that can be matched to tertiary or vocational education and employment. Research Program 3 aims to directly facilitate paths towards fulfilling lives for people with autism after school and inform government policy regarding employment and post school options. It gathers information on profiles of Australian adults with autism through two longitudinal studies and develops modules and tools to fully optimise social and community engagement, and support employment opportunities for adults with autism.

In the 2013 Investment Round, the following projects were approved in Program 3 and have commenced.

Program 3 Projects

Project	Short Title	Years	Lead Investigator/Institution	Project Funds	In-Kind Value
3.012RC	Program 3 Base Resources #	2013-17	Torbjorn Falkmer/Curtin Amanda Richdale/La Trobe Nick Lennox/UQ Julian Trollor/UNSW	\$1,440,000	\$2,008,212
3.013RC	Longitudinal study middle adults	2013-17	Julian Trollor/UNSW	\$88,662	\$640,938
3.014RC	EVAP and IEST+	2013-17	Torbjorn Falkmer/Curtin	\$48,000	\$1,690,600
3.015RC	Health and wellbeing for adults	2013-17	Nick Lennox/UQ	\$87,484	\$940,916
3.016RC	Unique profile ASD school leavers	2013-17	Amanda Richdale/La Trobe	\$87,484	\$1,140,876
3.017RC	Optimisation of recruitment	2013-14	Debra Costley and Trevor Clark / Aspect	\$120,000	\$332,305
Total Program 3				\$1,871,630	\$6,753,847

Base resources refers to postdoctoral fellows in each of four sites who are working together on projects 3.013, 3.014, 3.015, 3.016RC.

+ Education and Vocational Assessment Protocol (EVAP) and Integrated Employment Success Tool.

Performance against activities

Output 3.1 Comprehensive and unique profile of Australian adults with ASD, through two longitudinal studies, to provide them with the capacity to find a meaningful place in society.

Two longitudinal studies will be undertaken for two groups: young adults with autism and middle aged/older adults with autism. Each group will comprise 160 participants with autism and 160 participants without autism. Each participant will be tracked over 3 years, and outcomes on productivity, physical and mental health, well-being, and societal participation will be documented. The data collected from the studies will be recorded on a web portal, the ASD Connect Hub.

Both longitudinal studies have commenced with researchers identifying key measures and developing surveys for these distinct studies, ensuring that consistent measures are used across both where appropriate. Staff have been employed and PhD Scholars commenced to work on these studies. A one year recruitment optimisation study is almost complete which provides critical findings to enhance recruitment into the two longitudinal studies.

Output 3.2 Conducting empirically based interventions for adults with ASD to assist them to confidently engage in social relationships, tertiary education, employment, and community activities.

Research into interventions will contribute information and resources on relevant themes for adults with autism as identified by end-users and informed by the longitudinal studies. Modules will be developed covering the following areas:

- inclusion and success in higher education;
- social relationships;
- hazard perception
- this will all lead to greater community access/participation.

This output was not specifically addressed in the first Investment Round but has been addressed in the 2014 Investment Round, however, projects have not yet commenced.



Output 3.3 Tools, strategies and techniques developed to improve the health and wellbeing for adults with ASD.

Empirically based health and wellbeing information, tools and resource modules will be developed through research into the health concerns of adults with autism and their health care providers. An integrated and interactive suite of interventions (referred to as 'AWell') using validated strategies, techniques and tools will be developed, implemented and evaluated.

Project 3.015RC has commenced with a postdoctoral fellow overseeing this study with the project leader and PhD Scholar. Narratives of adults' health and wellbeing experiences have been analysed and a systematic review of literature undertaken. There has been significant networking with adults with autism and healthcare providers and ethical clearance is pending.

Output 3.4 Developing tools to assist adolescents/adults with ASD and their advisors in making informed choices regarding higher education and employment and ultimately creating more opportunities for people with autism to gain successful long term employment.

A new evidence-based Education and Vocational Assessment Protocol (EVAP) and Integrated Employment Success Tool (IEST) will consider the personal traits, job search supports, and job/environmental characteristics that influence the success of job placements for people with autism.

This output has been a focus of the first Investment Round with two PhD Scholars working with the Curtin based postdoctoral fellow and Project Leader on developing these tools. Ethical clearance has been received, a systematic review has been undertaken and a survey of adults is currently being conducted.

Output 3.5 Development of the web portal 'ASD Connect Hub'

A dedicated web portal 'ASD Connect Hub' will be developed as a one-stop evidence-based resource/information shop for adults with autism. This portal will also be the link between the three programs, as well as being an essential link between the CRC researchers and adults and adolescents with autism, parents, autism organisations and all relevant stakeholders/end-users. The portal will include social networking options, information and resources, health and well-being information, and collaborative research/evaluation domains and present continuously updated 'best practice' examples to speed up the process of facilitating adults with autism to find a place in society. Usability of the portal will be tested annually as part of ongoing review and maintenance to meet the needs of end-users.

Milestones R3.1.01 and R3.5.01 have been achieved with the Autism CRC website (www.autismcrc.com.au) being launched in August 2013 and advertised extensively via the CRC's internal and external newsletters, Facebook site, and correspondence with members of parliament and relevant government departments. The Facebook site is in regular use by members of the autism community and Autism CRC staff. It is also linked to many other Australian autism Facebook sites.

Output 3.6 This output will train 12 PhD students, employ 6 postdoctoral fellows and generate 60 scholarly and additional lay publications.

Program 3 milestones related to PhD students (R3.6.01) and postdoctoral fellows (R3.6.02) have been achieved. A June 2015 milestone (R3.6.04) has also been achieved in relation to the fourth postdoctoral fellow and milestone (R3.6.03) related to four more PhD students commencing being well in hand.

A second Investment Round was considered by the Board in June 2014, allowing for the following projects in Program 3 to be approved.

Program 3 Projects	Project Leader	TOTAL Cash	TOTAL In-kind
Strategic:			
Enhancing Social Relationships	Tele Tan, Sonya Girdler (Curtin); Murray Maybery (UWA)	\$416,000	\$1,724,981
Total Program 3 Strategic		\$416,000	\$1,724,981
Innovation:			
Studio G Multimedia program for young adults	Jill Ashburner (AQ)	\$50,000	\$153,800
Multi agent based career pathway recommender system	Tele Tan (Curtin)	\$48,000	\$147,224
Total Program 3 Innovation		\$98,000	\$301,024
Total Program 3 Projects		\$514,000	\$2,026,005



Research Collaboration

Autism CRC has been strategic in ensuring that collaborations between research participants, and research participants and end-user participants are operationalised. The Autism CRC Board required that each project funded must involve at least one end-user/industry partner participant, the only exception being base resources projects (1.001RC, 2.006RC, 3.012RC). The collaborations implemented in the first investment round are research collaborations in which research participants and end-user participants are working together to undertake a range of research projects which are critical to Autism CRC's milestones and deliverables. Over time it is anticipated that there will be an increased focus on utilisation and commercialisation collaborations.

Every project in the 2013 Investment Round involved end-users and a research participant. Autism CRC anticipates that end-users will engage with each other in the research

endeavours further as the CRC matures and as end-user research capacity is enhanced. Only a few end-users have researchers employed within their organisations with the exception of larger peak bodies, such as Aspect, Autism Queensland and private service provider, AEIOU. Over time it is also anticipated that end-users will be more specifically engaged together in utilisation activities as key research projects are completed.

The following table provides a breakdown of projects in the 2013 Investment Round involving collaborations between Essential and Other Participants. The majority of Other Participants are end-users and industry partners, whereas the majority of Essential Participants are research providers.

Project Number	Research Participants	End-User/ Industry Participants	Total
1.001RC	4	N/A	4
1.002RC	4	9	13
1.003RC	1	1	2
1.004RC	2	2	4
1.005RC	4	3	7
2.006RC	1	N/A	1
2.007RC	3	7	10
2.008RC	1	4	5
2.009RC	3	6	9
2.010RC	1	4	5
2.011RC	2	5	7
3.012RC	4	N/A	4
3.013RC	4	7	11
3.014RC	5	4	9
3.015RC	4	2	6
3.016RC	5	6	11
3.017RC	3	2	5

N/A - Not applicable



3.2 Education and Training

During Autism CRC's first year of operation, four PhD Scholars commenced studies, and three more were approved, with their studies to commence post June 30, 2014. Of the four commenced, three are working on projects within Program 3 and one in Program 1. Twelve PhD scholars were funded within projects in the 2013 Investment Round. It is anticipated that these will all be in place by the end of 2014.

PhD Scholars are being supervised by researchers and postdoctoral fellows at research organisations with input from end-users and from advisory groups involving end-users with autism. To date, advisory groups have been established in New South Wales, Queensland, Victoria and Western Australia.

PhD Scholars and their supervisors have been provided with a comprehensive PhD CRC induction package, including the key relevant policies and procedures. This has been very well received by Scholars and supervisors alike.

Autism CRC aims to provide a range of activities and educational experiences for PhD Scholars and Post-Doctoral Fellows that will enable them to contribute significantly to the autism community in Australia through research, its dissemination, the continuing development of professionals and community education. To this end, the CRC also strives

to engage PhD Scholars and Post-Doctoral Fellows with inter-professional teams of researchers from a range of disciplinary backgrounds and provide exposure to and engagement with the different professionals who work with individuals with autism and their families. It is expected that all Autism CRC PhD Scholars and Post-Doctoral Fellows will be actively engaged in these activities as they evolve throughout the life of the CRC through the following programs:

- Lab to Life scholar visits in Autism CRC laboratories, diagnostic clinics, classrooms and adult services/employment settings;
- Meet the Researcher community education sessions;
- Annual Autism CRC Scholar Meeting for researchers and PhD scholars;
- Access to Vitae Professional Development Framework for researchers and postgraduate scholars. (<http://www.vitae.ac.uk/>); and
- Media awareness training.

The first Autism CRC Participant Day and PhD Scholar Meeting will be held on 3 December 2014 in association with the Australasian Society for Autism Research (ASfAR) conference, 4-5 December 2014, at La Trobe University. This will provide the first face-to-face meeting opportunity for all PhD Scholars across the CRC.

CRC PhD Students 1 July 2013 – 30 June 2014

University	Student Name	Research Program	Code	Research Project	Study Mode	Start Date	Term	Expected Completion Date
Curtin University Australia	Ms Melissa Scott	3	3.014RC	Finding a Place in the Workplace and in the Community: EVAP development and testing & IEST development and testing	PhD	03/02/2014	3 years	February 2017
Curtin University Australia	Ms Megan Hatfield	3	3.014RC	Finding a Place in the Workplace and in the Community: EVAP development and testing & IEST development and testing	PhD	30/12/2013	3 years	December 2016
La Trobe University Australia	Ms Aspasia Stacey Rabba	1	1.005RC	The development and efficacy of a Family Support Program for newly diagnosed children with an Autism Spectrum Disorder	PhD	02/14	3 years	February 2017
The University of Queensland Australia	Ms Cindy Nicollet	3	3.015RC	Health and wellbeing for adults: tools strategies and techniques to improve health and wellbeing.	PhD	03/04/2014	3 years	April 2017



3.3 Financial Performance

Financial Management

Autism CRC Ltd Financial Overview

Autism CRC Ltd is a company limited by guarantee and was established on 1 March 2013. The CRC has established various financial systems and mechanisms to ensure appropriate governance of the CRC's financial affairs.

For the period ending 30 June 2014, Autism CRC had a net surplus of \$40,176. Expenditure totalled \$2,417,981 with \$953,163 spent on funding research project activities. The full set of financial statements is located in Appendix 2.

Participant Cash Contributions

From commencement of the CRC to 30 June 2014, Autism CRC has received \$4.1 million in cash contributions from Participants and the Commonwealth. The University of Queensland contributed \$250,000 in advance of its Commonwealth Agreement commitments. These funds were instrumental in allowing the CRC to be set up prior to receiving its first payment from the Commonwealth.

Cash contributions from all Essential Participants were received prior to 30 June, except for one Essential Participant quarterly payment, which was received in July 2014. As at 30 June, some Other Participant contributions were yet to be received.

In-kind Contributions

In 2013/14, Autism CRC held two investment rounds during the year with over \$10.8 million dollars committed to 29 projects. These projects are expected to generate in-kind (staff and non staff) contributions of \$32.8 million, which is approximately 48.6% of the total Commonwealth Agreement in-kind contribution target. Staff in-kind contributions from Participants totalled 15.2 FTE, with non-staff in-kind contributions totalling \$0.9 million.

3.4 Communications

The Australian autism community is a large and diverse one. With a commitment to end-user driven research, Autism CRC has developed a comprehensive communications strategy to ensure effective communications both within the CRC and with external stakeholders. Its objectives are:

Internal

- To build a community of professionals from essential and other participants to share and distribute news about Autism CRC.
- To establish strong lines of communication so information and research outcomes reach end-users and the organisations that support them.

External

- To build a 'knowledge hub' to disseminate research outcomes for end-user groups.
- To deliver a digital presence through the website, social media and enews, directing people to the information they need.
- To gain coverage in metropolitan and national print, radio and TV.

The range of organisations collaborating towards the common goal of improving the outcomes for people with autism is a world first. Autism CRC requires a multi-faceted approach to internal communication, ensuring all stakeholders are informed of developments within the CRC. This includes providing clear channels for researchers to communicate findings and collaborate across programs and projects.

The priority of Autism CRC is to improve life outcomes for people with autism. All projects are rigorously conducted in order to provide practical, evidence-based outcomes and meaningful data that can be utilised in real life contexts. It is imperative then to ensure the research findings are communicated to government and industry bodies that can implement policy change.

Autism CRC has brought together the leading minds and organisations in the field of autism across the life span and effective internal and external communication will build on this strong collaboration.



Activities in the reporting period

- An online presence established at autismcrc.com.au which has over 2,000 users a month.
- A Facebook presence created with an engaged community of stakeholders rapidly building. Plans are in place to use social media as a forum to engage further with end-users in setting future research priorities.
- Autism CRC 'intranet' established which will be a portal for all relevant information for researchers, participants and staff.
- Regular internal and external newsletter updates sent to all participants, project leaders, researchers and staff.
- Autism CRC launched at Parliament House by The Minister, The Hon Ian MacFarlane MP, in March 2014 with over 90 people in attendance.
- Several presentations delivered by Autism CRC researchers on behalf of Autism CRC throughout the year.
- The Autism CRC brand established and built on including mission, vision, values and culture of the organisation. Corporate style guidelines developed and disseminated.
- A Board meeting was held in Perth with plans underway for meetings to be held in Sydney and Melbourne, in addition to Brisbane meetings at the Autism CRC headquarters. This gave the Board the opportunity to see first-hand the progress happening across Programs and to engage with Participants.

3.5 Intellectual Property

Autism CRC recognises the value of intellectual property and its importance in enabling the utilisation and commercialisation of research outcomes, and strives to develop a culture where this is recognised and respected. A number of mechanisms are employed for the identification, protection and management of IP.

- Establishment of the Commercialisation Committee that is responsible for oversight of matters related to IP, the protection of new CRC IP as appropriate, and the utilisation and commercialisation of IP.
- Identification and recording of Background IP (BIP) on the Autism CRC IP register, as required in the Commonwealth Agreement, updated regularly as to the status of IP assets.
- Identification and recording of new CRC Centre IP (CIP) created through CRC programs on the Autism CRC IP register, updated regularly as to the status of IP assets.
- Publication approval processes for written and oral publications and posters and PhD theses overseen by the Director of Research and Education (on behalf of Autism CRC the legal owner of Centre IP).
- Publications Register in which all manuscripts submitted for publication and eventually published are registered along with pdf copies of the publication.
- Project Agreements and Project Plans include items on background IP required for the conduct of the project and centre IP likely to be developed/created by the project.
- IP identification and status specifically required in Project Progress and Final Reports.
- Up-skilling CRC staff and researchers/PhD Scholars through relevant education and training on intellectual property matters relevant to the Autism CRC.

These practices ensure that the Autism CRC complies with the National Principles of Intellectual Property Management for Publically Funded Research.

The following key items of intellectual property currently

held by Autism CRC and regularly reviewed by the Commercialisation Committee can be found in the table below. In the first year of operation there are no patents or other registrable forms of intellectual property to report on.

Description of Intellectual Property	Nature of Intellectual Property	Background Intellectual Property	Centre Intellectual Property
Project Intellectual Property			
AXAS™ Autism related risk prediction software Project 1.003RC	Trademark	X (University of Qld)	
3 Units in Graduate Certificate on: Intro to ASD Diagnosis of ASD Practicum Project 1.004RC	Copyright		X
The original and revised Social Attention and Communication Surveillance system, developed by La Trobe University (SACS-R); and the training materials for SACS-R. Project 1.005RC	Copyright	X (La Trobe University)	
Non Project Intellectual Property held by Autism CRC			
CRC logo and livery			
Webdomain name www.autismcrc.com.au			

3.6 Utilisation and commercialisation

The first year of the CRC's operation has seen a focus on the approval and commencement of research projects within its three core programs. The utilisation and commercialisation of research outcomes from these projects is a core objective of Autism CRC. To date, the CRC is on target to meet its utilisation and commercialisation outputs.

End-user driven research, and therefore engagement, is a core principle for the operation of the CRC. Research projects are to have at least one end-user involved as a participant. This not only ensures application-focused project definition, but promotes the utilisation of project outcomes.

With the focus on the commencement of research projects during the first year of operation, it is too early to report substantively on the utilisation of outputs. However, it is noted that within the first round of projects commissioned there are two one year projects:

- 2.009RC, which will present findings of an Australia wide educational needs analysis, to inform decisions about key end-user needs within Program 2 and hence influence further research directions; and
- 3.017RC, which surveys adult recruitment optimisation, with the findings to influence immediately how participant recruitment and engagement is undertaken within the two longitudinal adult surveys.

The Commercialisation Committee, as a sub-committee of the Autism CRC Ltd Board, has oversight of the IP development, protection and commercialisation activities of the CRC.

In the latter part of the reporting period, Autism CRC commenced activities and negotiations for the formation of a wholly-owned subsidiary company to further develop and commercialise a social and behavioural skills training program. The Secret Agent Society Program (SAS) was originally developed by Dr Renae Beaumont of Renae Beaumont Enterprises Pty Ltd, an Other Participant, for use by 8-12 year olds with high functioning autism and their families and teachers.

The subsidiary, Social Skills Training Pty Ltd (subsequently established in July 2014), will hold the exclusive commercialisation rights to SAS and future program developments. It will be responsible for the production and distribution of SAS materials, in addition to providing and facilitating practitioner training courses within Australia, initially with the CRC's end-user participants, and internationally.

No other new products or services commercialisation activities were undertaken during the CRC's first year of operation.



3.7 SME Engagement

SME engagement is embedded within Autism CRC as many of our end-user participants are SMEs, some of whom are represented on the Board and others on the Research and Development Committee.

Autism CRC engages with SMEs throughout Australia and internationally with the largest footprints in New South Wales, Queensland, Victoria and Western Australia. The majority of these are autism service providers or businesses that supply equipment or technology to schools, parents or service providers. The SMEs within the CRC can be categorised as:

- Autism peak bodies and service providers which are medium enterprises (AEIOU, Autism Queensland, Alpha Autism Victoria, Autism South Australia, Autism Association of Western Australia, Aspergers Services Australia, Autism Awareness, SA Group Enterprises)
- Autism Specific Early Learning and Care Centres (ASELCCs) which are small to medium enterprises (Queensland, NSW, Victoria, Tasmania, South Australia and Western Australia)
- Professional groups (Rural Health Alliance, Autism Advisory Board ASD; Australian College of Rural and Remote Medicine)
- Private autism clinics which are small enterprises (Minds and Hearts, Queensland; The Asperger's Syndrome Clinic, Queensland)
- Industry organisations (Hear and Learn, Victoria, and iiNET Ltd, WA) and Assistiveware (International SME).

As a guiding principle, Autism CRC and CRC researchers continue to prioritise the engagement of end-user SMEs. By engaging end-users from the outset, the CRC is better able to ensure its research is grounded in their needs and to ensure multiple pathways for dissemination and utilisation of research findings through engagement throughout the CRC's lifespan. It is incumbent on the CRC's researchers who are project leaders to ensure that end-users and SMEs are engaged with their research projects prior to projects being submitted for funding.

During the first year of operation, the CRC's targeted communication strategy has been to update our SMEs and end-users about CRC activities. One clear indication that the Autism CRC is assisting SMEs to build their innovation capacity is the fact that staff from SMEs are often project leaders and recipients of direct funding from the CRC. Secondly, the majority of Autism CRC projects have engaged end-user SMEs to ensure that the research projects can enhance innovation capacity and also ensure the likelihood for utilisation of research and development activities.

In the 2014 Investment Round, one of the CRC's strategic projects, the ASD Subtyping Project, will engage all the Autism Specific Early Learning and Care Centres (ASELCCs) and will fund a part time 0.2 research assistant position in each centre to support data collection, as well as train these individuals in a diagnostic assessment tool called the 3Di instrument, which will be of use to the ASELCCs beyond the CRC project itself. This exemplifies SME capacity building and also training in an evidence-based gold standard diagnostic assessment for regular use within these centres, enhancing their diagnostic assessment practices and research capacity.



4 Appendix

Appendix 1: List of Autism CRC Participants

Participant name	Type	Organisation type	ABN
AEIOU Foundation	Essential	Industry / Private Sector / End-user	19 135 897 255
Autism Queensland Ltd	Essential	Industry / Private Sector / End-user	79 253 351 418
Autism Spectrum Australia (Aspect)	Essential	Industry / Private Sector / End-user	12 000 637 267
Curtin University	Essential	University	99 143 842 569
Griffith University	Essential	University	78 106 094 461
La Trobe University	Essential	University	64 804 735 113
Mater Medical Research Institute Ltd	Essential	Industry / Private Sector / End-user	28 109 834 719
Queensland Department of Education and Training	Essential	State Government / End-user	76 337 613 647
Queensland University of Technology	Essential	University	83 791 724 622
University of New South Wales	Essential	University	57 195 873 179
University of Queensland	Essential	University	63 942 912 684
University of Western Australia	Essential	University	37 882 817 280
Affymetrix Inc	Other	Industry / Private Sector / End-user / International	
Alpha Autism Inc	Other	Industry / Private Sector / End-user	55 687 091 493
Asperger Services Australia	Other	Industry / Private Sector / End-user	14 389 908 238
AssistiveWare	Other	Industry / Private Sector / International	
Australian Advisory Board for Autism Spectrum Disorders	Other	Other / End-user	53 085 018 408
Australian College of Rural and Remote Medicine	Other	Other / End-user	12 078 081 848
Australian Council for Educational Research	Other	Industry / End-user	19 004 398 145
Autism Association of South Australia Inc	Other	Industry / Private Sector / End-user	41 905 977 886
Autism Association of Western Australia Inc	Other	Industry / Private Sector / End-user	54 354 917 843
Autism Awareness	Other	Industry / Private Sector / End-user	42 130 217 962
Autism Specific Early Learning and Care Centre - Anglicare SA	Other	Industry / End-user	69 187 578 153
Autism Specific Early Learning and Care Centre - KU Children's Services	Other	Industry / End-user	89 000 006 137
Autism Specific Early Learning and Care Centre - La Trobe University Community Children's Centre	Other	Industry / End-user	64 804 735 113
Autism Specific Early Learning and Care Centre - Nathan QLD (AEIOU)	Other	Industry / End-user	19 135 897 255
Autism Specific Early Learning and Care Centre - North West Tasmania (Burnie City Council)	Other	Industry / End-user	29 846 979 690
Autism Specific Early Learning and Care Centre - WA (AAWA)	Other	Industry / End-user	54 354 917 843
Brisbane Catholic Education	Other	Private sector / End-user	49 991 006 857
Catholic Education Commission of Victoria	Other	Private Sector / End-user	92 119 459 853
Catholic Education Office of WA	Other	Private Sector / End-user	97 244 688 522
Children's Health Services	Other	State Government / End-user	66 329 169 412



Participant name	Type	Organisation type	ABN
Disability Services Commission, WA	Other	State Government / End-user	36 922 715 369
F. Hoffmann-La Roche Ltd	Other	Industry / Private Sector / End-user/ International	
Hear and Learn	Other	Industry / Private Sector	26 125 822 479
iiNet Ltd	Other	Industry / Private Sector	48 068 628 937
Joseph Piven	Other	Individual / International	
Minds and Hearts	Other	Industry / Private Sector/ End-user	51 128 736 103
National Rural Health Alliance	Other	Other / End-user	68 480 848 412
Pathwest Laboratory Medicine WA	Other	State Government	13 993 250 709
University of Sydney	Other	University	15 211 513 464
Renae Beaumont Enterprises Pty Ltd	Other	Industry	
SA Group Enterprises Inc	Other	Private Sector/ End-user	40 005 498 775
The Aspergers Syndrome Clinic	Other	Industry / Private Sector / End-user	39 090 503 601
The Association of Independent Schools of QLD	Other	Industry / Private Sector/ End-user	88 662 995 577
The Royal Children's Hospital	Other	State Government / End-user	35 655 720 546
The Sydney Children's Hospital Network	Other	State Government / End-user	53 188 579 090
Western Australian Autism Diagnosticians Forum Inc	Other	Other / End-user	51 286 721 089

Appendix 2: Annual financial report for financial period ended 30 June 2014

Autism CRC Ltd
ABN 55 162 632 180

Annual Financial Report
For the financial period ended 30 June 2014

Autism CRC Ltd

ABN 55 162 632 180

Annual Financial Report For financial period ended 30 June 2014



	Page
Company Directory	3
Directors' Report	4
Statement of Comprehensive Income	10
Statement of Financial Position	11
Cash Flow Statement	12
Statement of Changes in Equity	13
Notes to the Financial Statements	14
Directors' Declaration	20
Auditor's Independence Declaration	21
Independent Auditor's Report	22

Autism CRC Ltd
ABN 55 162 632 180

Annual Financial Report
For the financial period ended 30 June 2014

Company Directory

Directors

Judy Brewer, Chair
Robert van Barneveld, Deputy Chair
Paul Field
Carole Green
Shirley Lanning
Paul Vincent
Garry Allison
Adrian Ford
Ian Harris
Vicki Pattemore
Scott Reading

Company Secretary

Kristina Frawley

Registered Office

Autism CRC Ltd
Level 3 Forestry Building, Long Pocket
The University of Queensland, Brisbane Queensland Australia 4072

Auditors

BDO Audit Pty Ltd
Level 10, 12 Creek Street
Brisbane, Queensland

Solicitors

FAL Lawyers
Level 16, 356 Collins Street
Melbourne Victoria



Directors' Report

The Directors of Autism CRC Ltd ("the Company" or "CRC") present their report with the financial statements of the company for the sixteen months ended (or "financial period ended") 30 June 2014.

Autism CRC Ltd is established and operates under its Constitution and is subject to the Commonwealth Agreement and Essential Participants Agreement.

Autism CRC Ltd is a company limited by guarantee, incorporated and domiciled in Australia.

Directors

Initial Interim Directors

Professor Sylvia Rodger, Ms Judy Brewer and Professor Robert van Barneveld were appointed as interim directors from the commencement of the company, 1 March 2013 to the first Annual General Meeting, 29 July 2013. Directors' meetings during this period were on an as needed basis. Professor Sylvia Rodger, B.Occ.Thy., M.Ed.St., PhD., FAOTA, resigned as interim director on 29 July 2013.

The Company's Board of Directors includes an independent chairperson, five independent directors, and five nominee directors. The Directors, appointed at the Company's first annual meeting on 29 July 2013 through to the end of the reporting period are:

Judy Brewer <i>Independent Chair</i>	B.Bus (Public Admin), Grad Dip Taxation, GAICD
Robert van Barneveld <i>Independent Deputy Chair</i>	B.Agr.Sc (Hon), PhD., RAnNutr. FAICD
Paul Field <i>Independent Director</i>	BA (Hons), MA. FAICD
Carole Green <i>Independent Director</i>	MBA, Master of Information Technology, Grad Diploma Computer Education, Grad Diploma Corporate Governance, B. Applied Science (Computing), Certificate of Teaching, GAICD
Shirley Lanning <i>Independent Director</i>	PhD (Microbiology), BSc (Hons 1) (Biological Sciences), FAICD
Paul Vincent <i>Independent Director</i>	Bachelor of Business (Accountancy), FCA, GAICD
Garry Allison <i>Nominee Director</i>	B.Ed(Hons), B.App. Science (Physio)(Hons), M.Ed., PhD
Adrian Ford <i>Nominee Director</i>	Bachelor of Social Studies, FAICD
Ian Harris <i>Nominee Director</i>	Master Education, Grad Dip Administration, Bachelor of Science (Agriculture), GAICD

Vicki Pattemore <i>Nominee Director</i>	PhD (Terrestrial Ecology), B.Sc (Hons 1), Certificate Small Business Management, GAICD
Scott Reading <i>Nominee Director</i>	Master of Commerce, Master of Business (Logistics Management), MAICD

Directors have been in office since the beginning of the financial period to the date of this report unless otherwise stated.

Company Secretary

The Company Secretary as at 30 June 2014 was Ms Kristina Frawley, who also acts as Chief Financial Officer (CFO) of the Company. She is CPA qualified and holds a Master of Commerce in Accounting and Commercial Administration. Ms Frawley was appointed Company Secretary on 22 July 2013.

Board Committees

The Board has established a number of Committees to assist in the execution of its duties and to allow detailed consideration of various issues. Current Committees of the Board are: Audit and Finance Committee; Remuneration, Nominations and Selection Committee; Governance and Risk Committee; Research and Development Committee; and Commercialisation Committee. Each of the Committees has its own formal charter setting out the authority delegated to it by the Board. All matters determined by these Committees are submitted to the full Board for ratification.

Audit and Finance Committee:

The Audit and Finance Committee assists the Board in its oversight of the integrity of financial reporting, internal control structures, audit functions and also compliance and risk management systems relating to the finance and audit functions.

During the reporting period, the Audit and Finance Committee consisted of Mr Paul Vincent (Chair), Mr Ian Harris, Mr Scott Reading with the CFO and CEO in attendance.

Remuneration, Nominations and Selection Committee:

The Remuneration Nomination and Selection Committee assist the Board in fulfilling its corporate governance responsibilities in regard to the selection and appointment of Directors to the Board and in the effective discharge of its responsibilities for:

- Appointment, review of performance of the Chief Executive Officer (CEO) and overview of the Executive Team;
- The system of remuneration and benefits for the Executive Team.

During the reporting period, the Remuneration, Nominations and Selection Committee consisted of Ms Judy Brewer (Chair), Ms Carole Green, Dr Shirley Lanning and Professor Robert van Barneveld.

Governance and Risk Committee:

The responsibilities of the Governance and Corporate Risk Committee (GCRC) are to ensure appropriate policies and procedures are in place to underpin best practice governance and to identify and manage corporate risk for the Company.

During the reporting period, the Governance and Risk Committee consisted of Ms Judy Brewer (Chair), Mr Adrian Ford, Dr Vicki Pattemore and Professor Garry Allison.



Research and Development Committee:

The Research and Development Committee is comprised of Essential Participants and Members appointed by the Board. The Committee provides a forum for consultation among the Essential Participants, a point of interaction between the Essential Participants and the Board and guidance and recommendations to the Board in relation to research and development undertaken within the CRC.

During the reporting period, the Research and Development Committee consisted of Professor Robert van Barneveld (Chair), Mr Paul Field, and a representative from each Essential Participant with Program Directors in attendance.

Commercialisation Committee

The Commercialisation Committee provides strategic advice and oversight of commercialisation and intellectual property management to the Board. This Committee reviews CRC research outcomes to identify new commercialisation opportunities, provide strategic direction on commercial activities and identifies opportunities for partnerships with commercial sector.

During the reporting period, the Commercialisation Committee consisted of Mr Paul Field (Chair), Mr Paul Vincent, Mr Scott Reading and Professor Robert van Barneveld.

Directors' and Committee Meetings

The number of Directors' meetings and various committee Meetings held during the financial period and the numbers of meetings attended by each director are:

	Directors' Meetings	Audit and Finance Committee	Commercialisation Committee	Governance and Risk Committee	Remuneration Committee	Research & Development Committee
Meetings Held:	10	4	3	2	2	2
Attended:						
Judy Brewer	8	n/a	n/a	1	2	n/a
Robert van Barneveld	10	n/a	3	1	2	2
Paul Field	10	n/a	3	n/a	n/a	1
Carole Green	10	n/a	n/a	n/a	2	n/a
Shirley Lanning	9	n/a	n/a	n/a	2	n/a
Paul Vincent	9	4	3	n/a	n/a	n/a
Garry Allison	9	n/a	n/a	2	n/a	n/a
Adrian Ford	10	n/a	n/a	2	n/a	n/a
Ian Harris	9	3	n/a	n/a	n/a	n/a
Vicki Pattemore	9	n/a	n/a	2	n/a	n/a
Scott Reading	10	3	3	1	n/a	n/a

Short and Long Term Objectives

The Company undertakes highly innovative research to directly improve the lifetime prospects of Australian individuals with ASD, provides much needed guidance, support and direction for their families, and enables medical practitioners, educators, therapists, and support workers to work effectively with people with ASD.

The Company aims to:

- promote the understanding of ASD in individuals;
- establish and operate a Cooperative Research Centre (CRC) that pursues relevant world class research and training;
- ensure that the Parties with their differing disciplines and backgrounds will, through their participation in the CRC, add value to each other so that the performance of the CRC will be greater than that of each Party acting independently;
- increase the skills of persons already working with individuals with ASD and their families , and train and equip new postgraduate and other students with skills and attributes to continue being productive in the field of ASD;
- promote a managed and cooperative approach to research and education in the Autism Community to maximise the benefits from that research and education; and
- carry out education activities for students and professional development of persons supporting individuals with ASD.

Principal Activities

The company's principal activity during the reporting period is facilitating research, supporting diagnosis and education in the field of Autism.

Results of Operations

The operating surplus of the Company for the financial period ended 30 June 2014 was \$40,176.

Review of Operations

To 30 June 2014, the Company had operating income of \$7,605,435.

The company's activities during the reporting period were:

- Establishment of the Autism CRC Ltd and premises;
- Contracted 12 Essential Participant Agreements;
- Contracted 36 Other Participant Agreements;
- Establishment and activation of the Autism CRC Ltd Board and governance structures;
- Establishment of operational management structures and practices;
- Launch of the CRC at Parliament House in Canberra;
- Recruitment of staff;
- Completion of two project investment rounds;
- Establishment of education and training activities;
- Development of internal and external stakeholder communications channels.

The setup of Autism CRC Ltd and the completion of two research project investment rounds were essential before full commencement of the CRC's research activities could occur. Over \$10.8 million dollars was committed to 29 research projects.

The Company uses a range of mechanisms to measure its performance.



Dividends

The Company is limited by guarantee and has no share capital. The Directors of the Autism CRC Ltd are precluded by the Company's Constitution from declaring a dividend. No dividends were paid or declared by Autism CRC Ltd for the year ended 30 June 2014.

Options

No options over unissued shares or interests in the company were granted during or since the end of the financial period, and there are no options outstanding at the date of this report.

State of Affairs and Events Subsequent to Balance Date

The Board engaged Mr Andrew Davis as Autism CRC Ltd's permanent CEO to commence full time work on 15 September 2014. Mr Davis comes with a wealth of experience in organisational leadership, commercialisation and governance.

In addition, during the financial year, the Board resolved at its meeting on 23 May 2014, subject to certain conditions, to acquire the Secret Agent Society (SAS) Program Business from Triple P International. Autism CRC Ltd made a \$200,000 equity investment and formed Social Skills Training Pty Ltd on 10 July 2014. This acquisition is not intended to have an impact on the activities of Autism CRC Ltd and will facilitate delivery of research outcomes under Autism CRC's Secret Agent Society Classroom Project having a direct impact on individuals with ASD and their families and carers.

In the opinion of the Directors, there were no other significant changes apart from those stated above that occurred during the reporting period. There has not arisen in the interval between the end of the financial period and the date of this report any matter or circumstances which has or may significantly affect the operations of the company, the results of those operations or the state of affairs of the Company in subsequent periods.

Indemnification of Officers and Auditors

The Company entered into agreements to indemnify all directors and officers of the Company against all liabilities to persons (other than the Company or a related body corporate), which arise out of the performance of their normal duties as director or executive officer unless the liability relates to conduct involving a lack of good faith. The Company has agreed to indemnify the directors and executive officers against all costs and expenses incurred in defending the action that falls within the scope of the indemnity and any resulting payments.

The Company provided for directors' and officers' liability insurance. The Company provides indemnification against all costs and expenses involved in defending legal actions and any resulting payments arising from a liability to persons (other than the Company or a related body corporate) incurred in their position as director or executive officer unless the conduct involves a wilful breach of duty or an improper use of inside information or position to gain advantage. No indemnity was provided for the auditors.

Environmental Regulations

The Company's operations are not regulated by any significant environmental regulation under a law of the Commonwealth or of a State or Territory.

Likely Developments and Expected Results

As the Company continues its activities, the financial result for next year will be consistent with 2014. Expenditure will increase as project payments are made towards projects authorised by the Autism CRC Ltd Board in the 2013 and 2014 investment rounds.

Proceedings on behalf of the Company

No proceedings have been entered into on behalf of the Company.

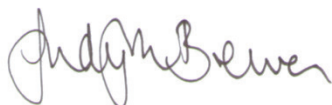
Members' Guarantee

The Company is limited by guarantee. If the company is wound up, the Constitution states that each member is required to contribute a maximum of \$100 towards meeting any outstanding obligations of the Company. The total amount members are liable to contribute if the company is wound up is \$1,100.

Auditor's Independence Declaration

The auditor's independence declaration under Section 307C is attached to this financial report.

This report has been made in accordance with a resolution of the directors of the Company.



Judy Brewer
Chair

Dated on the 25 of September 2014 in Brisbane.

Statement of Comprehensive Income For the financial period ended 30 June 2014

	<u>Note</u>	<u>1 March 2013 to 30 June 2014 \$</u>
Revenue from continuing operations		
Revenues	3	7,605,435
Other income		
Interest received		26,147
Expenses		
Staff salaries and wages		590,242
Project and Other Research Costs		953,163
Board fees and related expenses		270,049
Legal services		123,686
General and administrative		468,018
Depreciation		12,823
Total expenses		<u>2,417,981</u>
Income before in-kind expense		<u>5,213,601</u>
In-kind expenses		<u>5,173,425</u>
Income before tax		40,176
Income tax expenses		<u>-</u>
Total comprehensive income for the period		<u>40,176</u>

The Statement of Comprehensive Income should be read in conjunction with the attached notes

Statement of Financial Position

As at 30 June 2014

	<u>Note</u>	<u>30 June 2014</u> <u>\$</u>
Current assets		
Cash and cash equivalents	11a	2,273,118
Trade receivables	4	63,750
Prepayments		11,888
Total current assets		<u>2,348,756</u>
Non-current assets		
Property, plant and equipment	5	53,367
Total non-current assets		<u>53,367</u>
Total assets		<u>2,402,123</u>
Current liabilities		
Trade and other payables	6	524,430
Provisions	7	18,178
Deferred revenues	8	1,802,672
Total current liabilities		<u>2,345,280</u>
Non-current liabilities		
Deferred revenues	8	16,667
Total non-current liabilities		<u>16,667</u>
Total liabilities		<u>2,361,947</u>
Net assets		<u><u>40,176</u></u>
Equity		
Retained earnings	9	40,176
Total equity		<u><u>40,176</u></u>

The Statement of Financial Position should be read in conjunction with the attached notes



Cash Flow Statement

For the financial period ended 30 June 2014

	Note	1 March 2013 to 30 June 2014 \$
Cash flows from operating activities		
Receipt from Commonwealth Government		3,332,000
Receipts from Participants		792,820
Receipts from other sources		64,028
Payments to suppliers and employees		(1,875,687)
Interest received		26,147
Net cash provided by operating activities	11b	<u>2,339,308</u>
Cash flows from investing activities		
Payments for property, plant and equipment		<u>(66,190)</u>
Net cash used by investing activities		<u>(66,190)</u>
Cash flows from financing activities		
Cash proceeds from members' contributions		<u>-</u>
Net cash provided for financing activities		<u>-</u>
Net (decrease)/increase in cash and cash equivalents		2,273,118
Cash and cash equivalents at the incorporation date		<u>-</u>
Cash and cash equivalents at 30 June 2014	11a	<u><u>2,273,118</u></u>

The Cash Flow Statement should be read in conjunction with the attached notes

Statement of Changes in Equity
For the financial period ended 30 June 2014

1 March 2013 to 30 June 2014	Retained earnings	Total
	\$	\$
Balance at Incorporation Date	-	-
Profit for the period	40,176	40,176
Balance at 30 June 2014	40,176	40,176

The Statement of Changes in Equity should be read in conjunction with the attached notes

Notes to the financial statements

For the financial period ended 30 June 2014

Note 1. Introduction

Autism CRC Ltd is a company limited by guarantee incorporated and domiciled in Australia.

Authorisation of financial report

The financial report was approved by resolution of the Board of Directors on 25 September 2014.

Note 2. Summary of accounting policies

In the directors opinion, the Company is not a reporting entity as users of the financial report are unlikely to exist who are unable to command the preparation of reports tailored to satisfy their information needs. Therefore, this financial report is a 'special purpose financial report' and has been prepared to meet requirements of the Corporations Act 2001.

Statement of compliance

The financial statements have been prepared in accordance with the recognition and measurement requirements specified by the Australian Accounting Standards and Interpretations issued by the Australian Accounting Standards Board and the disclosure requirements of AASB 101 "Presentation of Financial Statements", AASB 107 "Cash Flow Statements" and AASB 108 "Accounting Policies, Changes in Accounting Estimates and Errors", AASB 1031 "Materiality" and AASB 1048 "Interpretation and Application of Standards". These financial statements do not conform to International Financial Reporting Standards as issued by the International Accounting Standards Board.

Basis of Preparation

The financial report has been prepared on an accrual basis, and is based on the historical cost method unless otherwise stated. Accounting policies are selected and applied in a manner which ensures that the resulting financial information satisfies the concepts of relevance and reliability, thereby ensuring that the substance of the underlying transactions or other events is reported. The financial report is presented in Australian dollars and rounded to the nearest dollar.

Financial Period

The current financial period is the 16 months from 1 March 2013 to 30 June 2014.

The following significant accounting policies have been adopted in the preparation and presentation of the financial report.

(a) Cash and cash equivalents

Cash and cash equivalents comprise cash on hand and at bank with original maturity of three months or less.

(b) Employee Benefits

Provision is made for benefits accruing to employees in respect of wages and salaries, annual leave and long service leave when it is probable that settlement will be required and they are capable of being measured reliably.

Provisions made in respect of employee benefits expected to be settled within 12 months, are measured at their nominal values using the remuneration rate expected to apply at the time of settlement.

Provisions made in respect of employee benefits which are not expected to be settled within 12 months are measured at the present value of the estimated future cash outflows to be made by the company in respect of services provided by employees up to reporting date.

(c) Receivables

Receivables are carried at nominal amounts due less any provision for doubtful debts and are non-interest bearing. A provision for doubtful debts is recognised when collection of the full amount is no longer probable.

Notes to the financial statements For the financial period ended 30 June 2014

Note 2. Summary of accounting policies (continued)

(d) Goods and services tax

Revenues, expenses and assets are recognised net of the amount of goods and services tax (GST) except:

- (i) where the amount of GST incurred is not recoverable from the taxation authority, it is recognised as part of the cost of acquisition of an asset or as part of an item of expense; or
- (ii) for receivables and payables which are recognised inclusive of GST.

The net amount of GST recoverable from, or payable to, the taxation authority is included as part of receivables or payables.

Cash flows are included in the cash flow statement inclusive of GST.

(e) Income Tax

The Company has been endorsed by the Australian Tax Office as income tax exempt under Subdivision 50-B of the Income Tax Assessment Act 1997 as a not-for profit entity.

(f) Payables

Trade payables and other accounts payable are recognised when the company becomes obliged to make future payments resulting from the purchase of goods and services.

(g) Research and Development

Expenditure on research and development activities, undertaken with prospect of gaining new scientific or technical knowledge and understanding is recognised the year when incurred.

(h) Depreciation

Depreciation is recognised on a straight-line basis over the life of the CRC.

(i) Revenue recognition

Interest revenue

Interest revenue is recognised on a time proportionate basis that takes into account the effective yield on the financial asset.

Cash Contributions

Cash contributions from members and participants are recognised when the company is in control of or has the right to receive the contributions.

Government grants

Government grants received on the condition requiring specified services delivered or conditions fulfilled are considered reciprocal. Such grants are initially recognised as deferred income and then subsequently recognised in the periods necessary to match them with related costs and the fulfilment of services delivered or conditions fulfilled.

Government grants of a non-reciprocal nature are recognised when the company obtains control of the funds.



Notes to the financial statements For the financial period ended 30 June 2014

Note 2. Summary of accounting policies (continued)

(j) In-kind contributions

In-kind contributions as reported from Participants are brought to account as revenue and expenditure. In-kind contributions are measured at fair value based on reported in-kind consistent with the valuation principles agreed to in the terms of Autism CRC Participants' Agreements.

The types of in-kind expenditure recorded by the Company mainly include staffing costs and direct research expenditure. This expenditure was incurred by Participants in conducting research and other CRC activities on behalf of the Company.

(k) Critical Accounting Estimates & Judgements

In the application of the Company's accounting policies, management is required to make judgements, estimates and assumptions about carrying values of assets and liabilities that are not readily apparent from other sources. The estimates and associated assumptions are based on historical experience and various other factors that are believed to be reasonable under the circumstances, the results of which form the basis of the judgements. Actual results may differ from these estimates. The estimates and underlying assumptions are reviewed on an ongoing basis. Revisions to accounting estimates are recognised in the period in which the estimate is revised if the revision affects only that period or in the period of the revision and future periods if the revision affects both current and future periods.

Judgements made by management in the application of the Company's accounting policies that have significant effects on the financial statements and estimates with a significant risk of material adjustments in the next year are disclosed, where applicable, in the relevant notes to the financial statements.

(l) New standards and interpretations not yet adopted

Australian accounting standards and interpretations that have recently been issued or amended but are not yet mandatory have not been early adopted by the company for the reporting period ended 30 June 2014. The company has not yet assessed the impact of these new or amended accounting standards or interpretations.

(m) Rounding

The Company is a company to which Class Order 98/0100 applies and amounts have been rounded off in accordance with this Class Order to the nearest dollar.

Notes to the financial statements

For the financial period ended 30 June 2014

	2014 \$
Note 3. Revenue	
Commonwealth government – CRC program grant	1,662,662
Participant Cash Contributions	755,320
Participant In-kind Contributions	5,173,425
Other Income	14,028
	<u>7,605,435</u>
Note 4. Trade receivables	
Trade receivables	63,750
	<u>63,750</u>
Note 5. Property, plant and equipment	
Plant and equipment	66,190
Less: accumulated depreciation	(12,823)
	<u>53,367</u>
Note 6. Trade and other payables	
Trade payables	415,492
Accrued Expenses	77,010
GST payables	31,928
	<u>524,430</u>
Note 7. Provisions	
Employee entitlements	18,178
	<u>18,178</u>
Note 8. Deferred Revenues	
Current	
Commonwealth Government CRC program grant	1,669,339
The University of Queensland	100,000
Other Government grants	33,333
	<u>1,802,672</u>
Non-current	
Other Government grants	16,667
	<u>16,667</u>
Note 9. Retained Earnings	
Net income for the period end	40,176
	<u>40,176</u>
Accumulated surplus	40,176
	<u>40,176</u>



Notes to the financial statements For the financial period ended 30 June 2014

2014
\$

Note 11. Notes to the cash flow statement

(a) Reconciliation of Cash

For the purposes of the cash flow statement, cash and cash equivalents includes cash on hand and in banks and deposits at call. Cash and cash equivalents at the end of the financial period as shown in the cash flow statement is reconciled to the related items in balance sheet as follows:

Cash on hand	71
Cash at bank	36,608
Short term bank deposits	2,236,439
Total cash and cash equivalents	<u>2,273,118</u>

(b) Reconciliation of profit for the period to net cash flows from operating activities

Profit for the period	40,176
Add depreciation	12,823

(Increase)/decrease in current assets

Trade debtors and prepayments	(63,750)
Prepayments	(11,888)

Increase/(decrease) in liabilities

Trade creditors and other liabilities	415,492
Unearned income	1,819,339
Other payables	108,938
Provisions for employee benefit	18,178

Net cash provided by operating activities	<u>2,339,308</u>
---	------------------

Note 12. Auditors' Remuneration

Audit of the financial statements	<u>16,250</u>
-----------------------------------	---------------

Note 13. Related Parties

During the reporting period the independent directors were paid compensation for the performance of their duties as a director. Nominee directors do not receive compensation.

The following directors were paid for the performance of work, as agreed with the Autism CRC Board, outside their role as a director. This work related to managerial duties required due to the absence of a permanent CEO. Amounts are exclusive of GST.

Robert van Barneveld	Barneveld Nutrition Pty Ltd	\$20,000
Scott Reading	Horizzen Pty Ltd	\$55,815

Note 14. After Balance Date Events

The Board engaged Mr Andrew Davis as Autism CRC Ltd.'s permanent CEO to commence on 15 September 2014.

In addition, during the financial period, the Board resolved on 23 May 2014, subject to meeting certain conditions, to acquire the Secret Agent Society (SAS) Program Business from Triple P International. Social Skills Training Pty Ltd was formed on 10 July 2014 and is wholly owned by Autism CRC Ltd. This acquisition is not intended to have an impact on the activities of Autism CRC Ltd.

In the opinion of the Directors, there has not arisen in the interval between the end of the financial period and the date of this report any matter or circumstances other than disclosed above, which has or may significantly affect the operations of the company, the results of those operations or the state of affairs of the Company in subsequent periods.



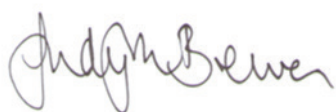
Directors' Declaration

The directors have determined that the company is not a reporting entity and that this special purpose financial report should be prepared in accordance with the accounting policies described in Note 2 to the financial statements.

The directors of the company declare that:

1. The financial statements, comprising the statement of comprehensive income, statement of financial position, statement of cash flows, statement of changes in equity, and accompanying notes, are in accordance with the Corporations Act 2001 and:
 - a. comply with Australian Accounting Standards to the extent described in Note 2, and the *Corporations Regulations 2001*; and
 - b. give a true and fair view of the company's financial position as at 30 June 2014 and of its performance for the period ended on that date.
2. In the directors' opinion, there are reasonable grounds to believe that the company will be able to pay its debts as and when they become due and payable.

This declaration is made in accordance with a resolution of the Board of Directors and is signed for and on behalf of the directors by:



Judy Brewer
Chair

Dated on the 25th of September 2014 in Brisbane.



DECLARATION OF INDEPENDENCE BY ALBERT LOOTS TO THE DIRECTORS OF AUTISM CRC LTD

As lead auditor of Autism CRC Ltd for the year ended 30 June 2014, I declare that, to the best of my knowledge and belief, there have been no contraventions of:

- the auditor independence requirements of the *Corporations Act 2001* in relation to the audit; and
- any applicable code of professional conduct in relation to the audit.

This declaration is in respect Autism CRC Ltd and the entities it controlled during the period.

A handwritten signature in black ink, appearing to be 'A S Loots', written in a cursive style.

A S Loots





INDEPENDENT AUDITOR'S REPORT

To the members of Autism CRC Limited

Report on the Financial Report

We have audited the accompanying financial report of Autism CRC Ltd, which comprises the statement of financial position as at 30 June 2014, the statement of comprehensive income, statement of changes in equity and statement of cash flows for the year then ended, notes comprising a summary of significant accounting policies and other explanatory information, and the directors' declaration.

Directors' Responsibility for the Financial Report

The directors of the company are responsible for the preparation of the financial report that gives a true and fair view and have determined that the basis of preparation described in Note 2 to the financial report is appropriate to meet the requirements of the *Corporations Act 2001* and is appropriate to meet the needs of the members.

The directors' responsibility also includes such internal control as the directors determine is necessary to enable the preparation of a financial report that gives a true and fair view and is free from material misstatement, whether due to fraud or error.

Auditor's Responsibility

Our responsibility is to express an opinion on the financial report based on our audit. We conducted our audit in accordance with Australian Auditing Standards. Those standards require that we comply with relevant ethical requirements relating to audit engagements and plan and perform the audit to obtain reasonable assurance about whether the financial report is free from material misstatement.

An audit involves performing procedures to obtain audit evidence about the amounts and disclosures in the financial report. The procedures selected depend on the auditor's judgement, including the assessment of the risks of material misstatement of the financial report, whether due to fraud or error. In making those risk assessments, the auditor considers internal control relevant to the company's preparation of the financial report that gives a true and fair view in order to design audit procedures that are appropriate in the circumstances, but not for the purpose of expressing an opinion on the effectiveness of the company's internal control. An audit also includes evaluating the appropriateness of accounting policies used and the reasonableness of accounting estimates made by the directors, as well as evaluating the overall presentation of the financial report.

We believe that the audit evidence we have obtained is sufficient and appropriate to provide a basis for our audit opinion.

BDO Audit Pty Ltd ABN 33 134 022 870 is a member of a national association of independent entities which are all members of BDO Australia Ltd ABN 77 050 110 275, an Australian company limited by guarantee. BDO Audit Pty Ltd and BDO Australia Ltd are members of BDO International Ltd, a UK company limited by guarantee, and form part of the international BDO network of independent member firms. Liability limited by a scheme approved under Professional Standards Legislation (other than for the acts or omissions of financial services licensees) in each State or Territory other than Tasmania.



Independence

In conducting our audit, we have complied with the independence requirements of the *Corporations Act 2001*.

Opinion

In our opinion:

The financial report of Autism CRC Limited is in accordance with the *Corporations Act 2001*, including:

- (a) giving a true and fair view of the company's financial position as at 30 June 2014 and of its performance for the year ended on that date; and
- (b) complying with Australian Accounting Standards to the extent described in Note 2, and the *Corporations Regulations 2001*.

Basis of Accounting

Without modifying our opinion, we draw attention to Note 2 to the financial report, which describes the basis of accounting. The financial report has been prepared for the purpose of fulfilling the directors' financial reporting responsibilities under the *Corporations Act 2001*. As a result, the financial report may not be suitable for another purpose.

BDO Audit Pty Ltd

A stylized signature of the BDO firm, consisting of the letters 'BDO' in a cursive, handwritten style.

A handwritten signature in black ink, appearing to read 'A S Loots'.

A S Loots



Appendix 3: Autism CRC Publications during Reporting Period

- Program 1: An, J. Y., Cristino, A. S., Zhao, Q., Edson, J., Williams, S. M., Ravine, D., Wray, J., Marshall, V. M., Hunt, A., Whitehouse, A. J. O. and Claudianos, C. (2014) 'Towards a molecular characterization of autism spectrum disorders: an exome sequencing and systems approach', *Translational Psychiatry*, 4 : e394.1-e394.9.
- Program 3: Horlin C., Falkmer M., Parsons R., Albrecht M. A., Falkmer T. (2014) 'The Cost of Autism Spectrum Disorders', *PLOS ONE PLOS One*, 9(9):e106552.doi:10.1371/journal.pone.0106552.

Appendix 4: Glossary of Terms

AAWA	Autism Association of Western Australia
ACNC	Australian Charities and Not-for-profits Commission
AEIOU	AEIOU Foundation (Essential Participant)
ASD	Autism Spectrum Disorder
ASELCC	Autism Specific Early Learning and Care Centre
ASPECT	Autism Spectrum Australia (Essential Participant)
BIP	Background IP
CEO	Chief Executive Officer
CFO	Chief Financial Officer
CIP	Centre IP
CRC	Cooperative Research Centre
EVAP	Education and Vocational Assessment Protocol
EYBSP	Early Years Behaviour Support Project
GCAD	Graduate Certificate in Autism Diagnosis
GP	General Practitioner
IDPA	Integrated Diagnostic Protocol
IENT	Integrated Employment Success Tool
IP	Intellectual Property
MYBSP	Middle Years Behaviour Support Project
PhD	Doctor of Philosophy
Qld DETE	Queensland Department of Education, Training and Employment
RHD	Research Higher Degree
SACS-R	Social, Attention and Communication Scale- Revised
SAS	Secret Agent Society
SME	Small and Medium Enterprise
TCC	Tele-Classroom Consultation
WRI	Wesley Research Institute



p PO Box 6068, St Lucia Q 4067
t +61 7 3377 0600
e info@autismcrc.com.au
w autismcrc.com.au

Autism CRC Ltd
Cooperative Research Centre for
Living with Autism Spectrum Disorders
Level 3 Forestry Building, Long Pocket Campus,
The University of Queensland QLD 4072
80 Meiers Road, Indooroopilly
ABN 55 162 632 180

