



# Pre-emptive Therapy for Infants Showing Early Signs of Autism

Improves Parent-Reported Communication and Language Skills

Kristelle Hudry



**Business**  
Cooperative Research  
Centres Program



# My place in the autism community

Understanding the presentation of autism in early life

How autism emerges in early life

How outcomes are optimised, for children and families including through early support



# Background to AICES



Pre-emptive support may substantially improve outcomes

But requires both:

- Efficacious intervention

Green, Charman, Pickles, et al. (2015). *Lancet Psychiatry*, 2, 133-140.



- Accurate early identification.

Barbaro, et al. (2018). Presentation at the *International Society for Autism Research*, May.



# The AICES trial

Among 9- to 14-month-olds with signs of autism  
6-months of iBASIS-VIPP would:

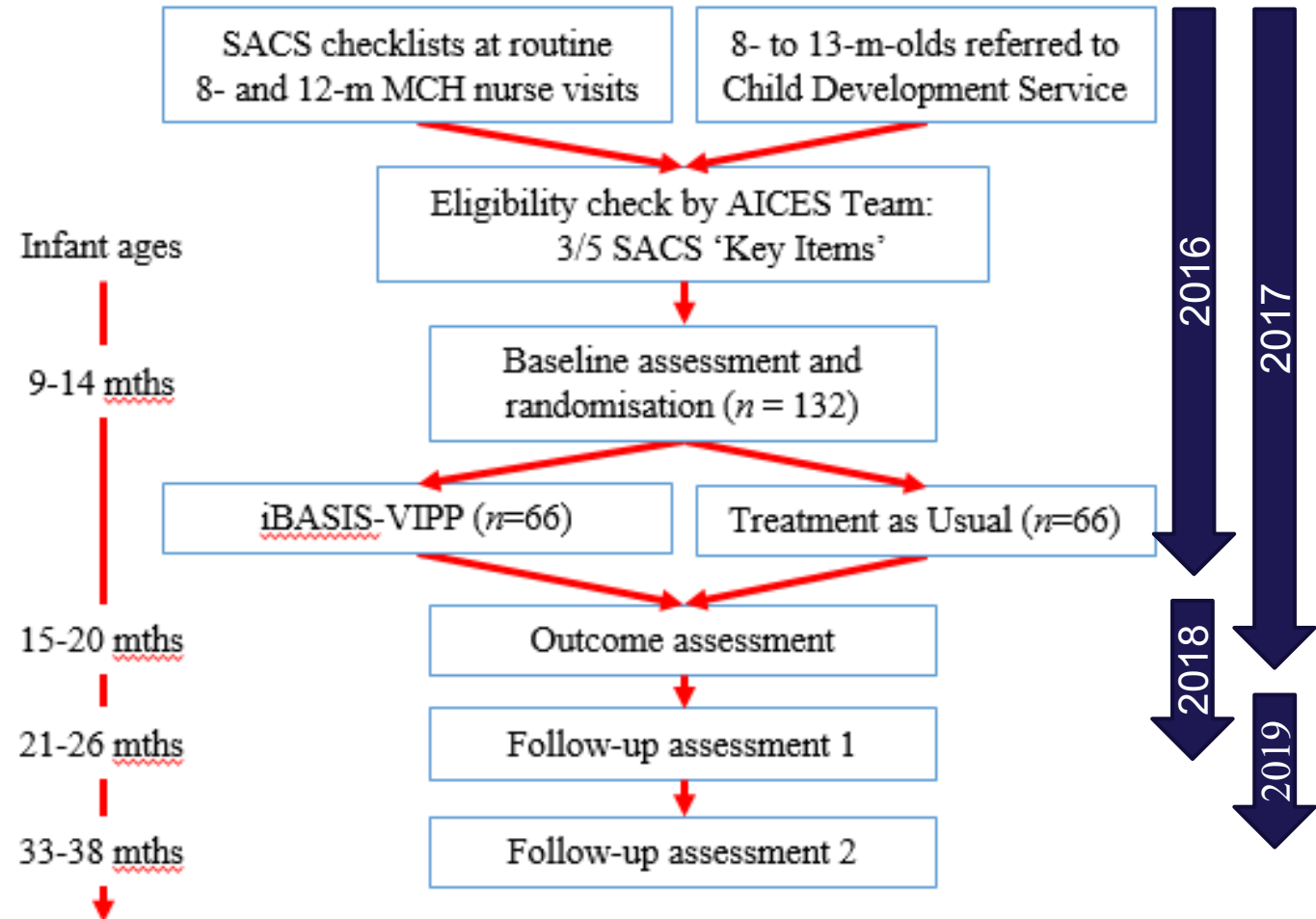
- Improve parent-child interaction quality
- Improve infant developmental and language skills
- Reduce the extent of early autism behaviours



# AICES trial design

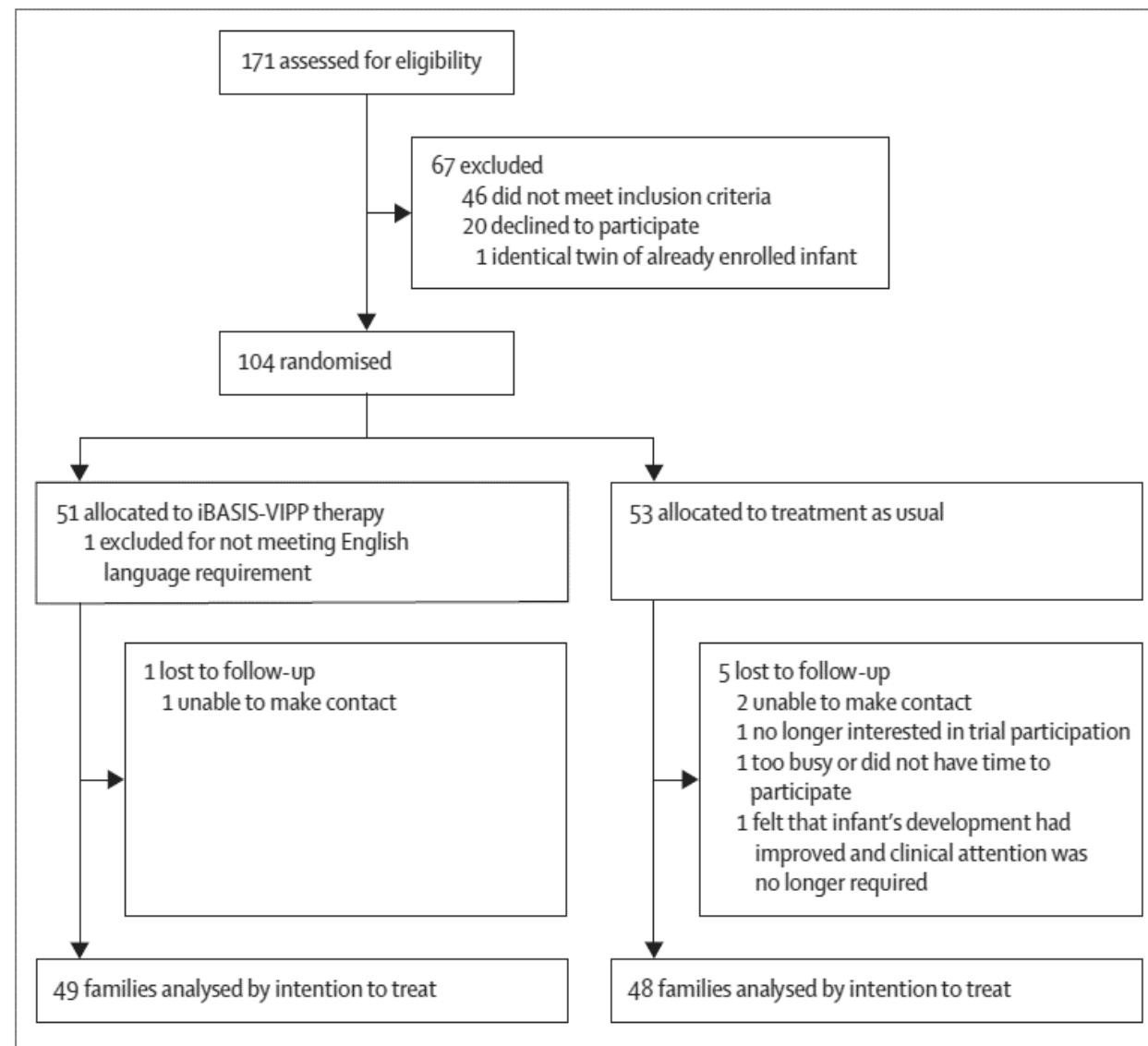
## Full-scale efficacy trial

- 2 site, 2 arm
- single (rater) blind RCT



# AICES participants

	iBASIS-VIPP (n=50)	Treatment as usual (n=53)
<b>Infant characteristics</b>		
Sex		
Boys	38 (76%)	32 (60%)
Girls	12 (24%)	21 (40%)
Older sibling with autism spectrum disorder	10 (20%)	10 (19%)
Chronological age (months)	12·40 (1·93)	12·38 (2·02)
Adjusted age (months)	12·12 (1·98)	12·31 (2·00)
<b>Family characteristics</b>		
Annual household income ≥AUD\$50 000*	40 (95%)	44 (88%)
Mother completed university degree	33 (66%)	29 (55%)
Infant living with both biological parents	49 (98%)	52 (98%)



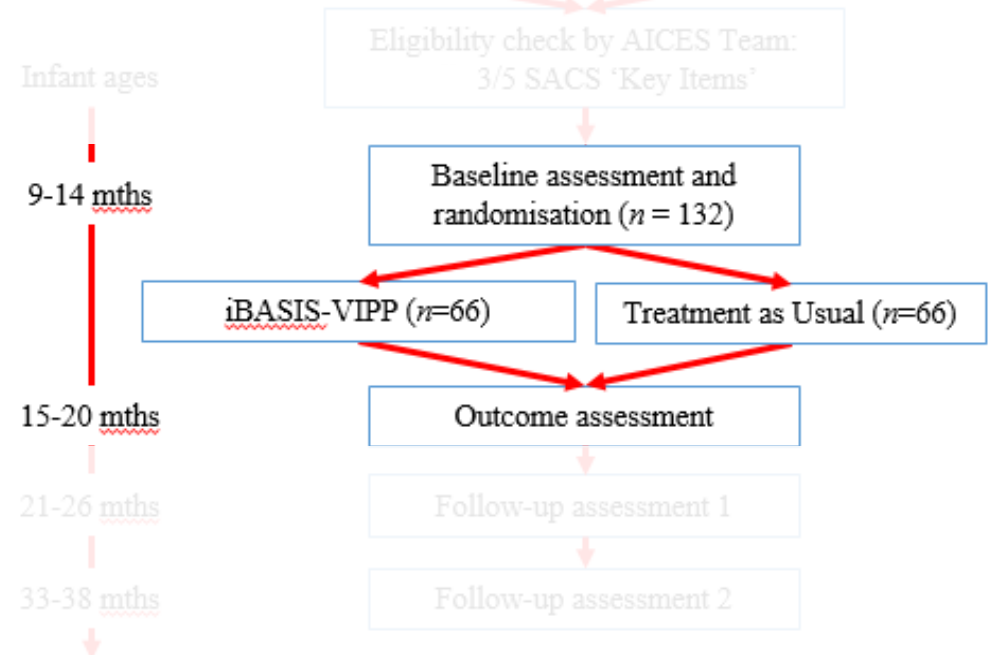
# iBASIS-VIPP therapy

10 fortnightly in-home sessions:  
Parent, infant and AICES therapist

- Therapist filmed parent-infant interaction
- Guided reflection of previous session tape

Highlighting:

- Emerging infant skills
- Supportive parent behaviours
- Daily home practice activities





# AICES trial measures

- Parent-child interaction quality (MACI; Wan et al. 2015)
  - Parent sensitive responsiveness & non-directiveness
  - Infant positive affect & liveliness
- Infant developmental and language skills
  - Mullen Scales of Early Learning (MSEL; Mullen, 1995)
  - Vineland Adaptive Behaviour Scales (VABS; Sparrow et al., 2000)
- Extent of early autism behaviours
  - Autism Observation Scale for Infants (AOSI; Bryson et al., 2008)





# Primary results

## Hypothesised:

↓ early autism behaviours

↑ parent-child interaction quality

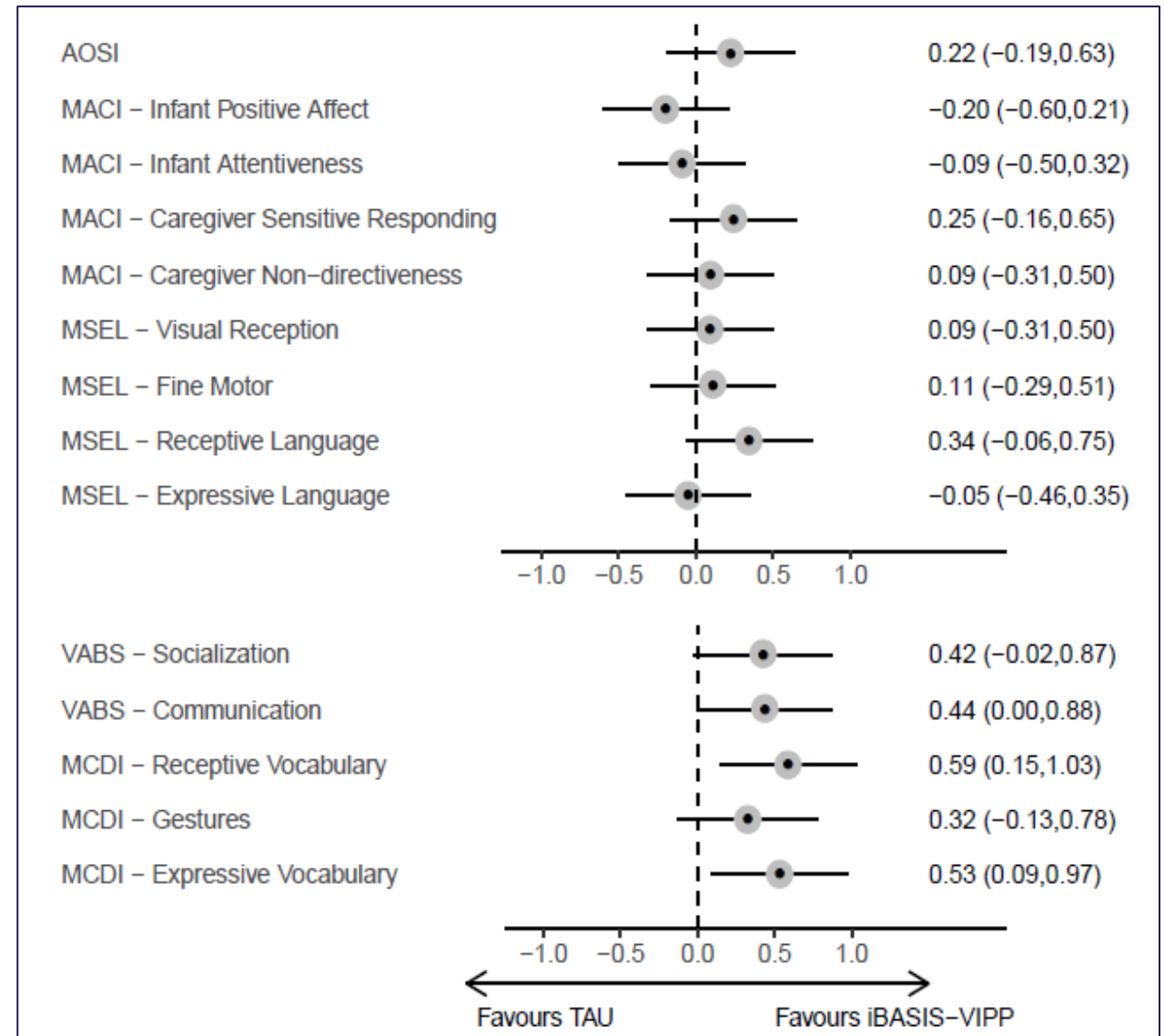
↑ assessed infant skills:

- Developmental abilities
- Communication & language

# Primary results

## Hypothesised:

- ✗ early autism behaviours
- ✗ parent-child interaction quality
- assessed infant skills:
  - ✗ Developmental abilities
  - ✓ Communication & language



# Next steps for this research

Follow-up children to ages 2- and 3-years

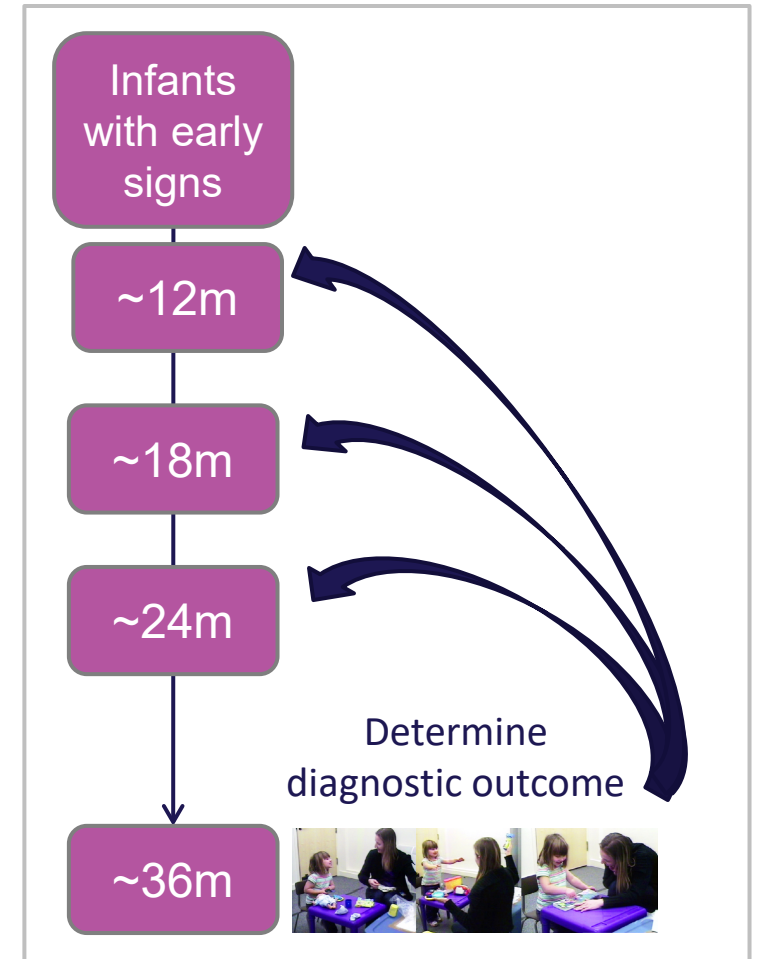
- Recently completed, February 2020

Secondary coding of communication and language

- Natural Language Samples from parent-child interaction footage

Aggregate dataset with US-based

**Adaptive Responsive Teaching (ART) trial** (Watson et al., 2017)



# New trial of very early support

New trial recruiting expectant parents at two sites:



- Families where an existing child has autism, ADHD, intellectual disability
- Or where parent – expectant mum, biological dad – is autistic

Email: [BabyAICES@latrobe.edu.au](mailto:BabyAICES@latrobe.edu.au)



## The Baby AICES Study



Pregnant women are invited to join this study about early infant communication

For pregnant women (in Melbourne and Perth) who:

- Have a family history of Autism, ADHD or intellectual disability
- Speak English as the main language at home
- Are pregnant with a single baby (eg. not pregnant with twins or triplets)

**La Trobe University**

Kristelle Hudry

Josephine Barbaro

Cathy Bent

Lacey Chetcuti

Stefanie Dimov

Cheryl Dissanayake

Megan Grant Cherie Green

Teresa Iacono Nancy Sadka

Jodie Smith

Scott Wakeling

**University of South Australia**

Leonie Segal

**AICES**

The Australian Infant Communication and Engagement Study



**WA Child Development Service**

John Wray

Emma Davidson

Jane Doyle

Michelle Renton

Cat Rowbottam

**Guys & St Thomas' Hospital, UK**

Vicky Slonims

**Telethon Kids Institute**

**University of Western Australia**

Andrew Whitehouse

Kandice Varcin

Gail Alvares

Maryam Boutrus

Abby Chee Alena Clark

Matthew Cooper

Megan Harrap Lisa Matys

Murray Maybery

Sarah Pillar

**University of Manchester, UK**

Jonathan Green

Carol Taylor Ming Wai Wan



# Thank you

**Kristelle Hudry**

k.hudry@latrobe.edu.au



Autism CRC is the world's first national, cooperative research centre focused on autism. We are taking a whole-of-life approach to autism focusing on early years, school years and adulthood.